



[Go to Product page](#)

Datasheet for ABIN7122377

C14orf102 Protein (AA 11-200) (His tag)

1 Image

Overview

Quantity:	50 µg
Target:	C14orf102
Protein Characteristics:	AA 11-200
Origin:	Human
Source:	Escherichia coli (E. coli)
Protein Type:	Recombinant
Purification tag / Conjugate:	This C14orf102 protein is labelled with His tag.
Application:	ELISA, Western Blotting (WB)

Product Details

Purity:	Greater than 95 % by SDS-PAGE gel analyses
Sterility:	0.2 µm filtered

Target Details

Target:	C14orf102
Alternative Name:	NRDE2 (C14orf102 Products)
Background:	C14orf102, NRDE2, Protein NRDE2 homolog, UPF0614 protein C14orf102
Molecular Weight:	21.1 kDa
UniProt:	Q9H7Z3

Application Details

Application Notes: Optimal working dilution should be determined by the investigator.

Restrictions: For Research Use only

Handling

Format: Lyophilized

Reconstitution: Centrifuge the vial at 10,000 rpm for 1 minute, reconstitute at 200 µg/mL in sterile distilled water by gentle pipetting 2-3 times, don't vortex

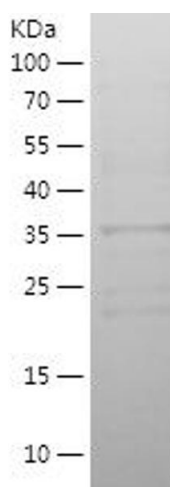
Buffer: Lyophilized from a 0.2 µm filtered solution in PBS with 5 % trehalose, pH 7.4

Storage: 4 °C,-20 °C

Storage Comment: -20°C for 12 months as lyophilized, 2-8°C for 1 month under sterile conditions after reconstitution

Expiry Date: 12 months

Images



Western Blotting

Image 1.