

Datasheet for ABIN7122476

**CTGF Protein (AA 182-250) (His tag)**[Go to Product page](#)**1** Image

## Overview

Quantity:	50 µg
Target:	CTGF
Protein Characteristics:	AA 182-250
Origin:	Human
Source:	Escherichia coli (E. coli)
Protein Type:	Recombinant
Purification tag / Conjugate:	This CTGF protein is labelled with His tag.
Application:	Western Blotting (WB), ELISA

## Product Details

Purity:	Greater than 95 % as determined by SDS-PAGE
Sterility:	0.2 µm filtered

## Target Details

Target:	CTGF
Alternative Name:	CTGF ( <a href="#">CTGF Products</a> )
Background:	CCN 2, CCN family member 2, CCN2, Connective tissue growth factor, Ctgf, CTGF_HUMAN, Hcs 24, Hcs24, Hypertrophic chondrocyte specific protein 24, Hypertrophic chondrocyte-specific gene product 24, Hypertrophic chondrocyte-specific protein 24, IBP-8
Molecular Weight:	7.5 kDa

## Target Details

UniProt:	<a href="#">P29279</a>
Pathways:	<a href="#">Regulation of Lipid Metabolism by PPARalpha</a> , <a href="#">Positive Regulation of Endopeptidase Activity</a> , <a href="#">Growth Factor Binding</a>

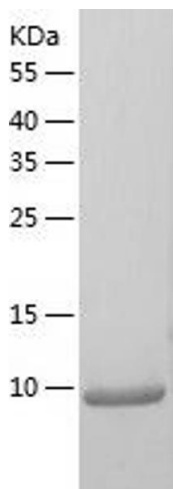
## Application Details

Application Notes:	Optimal working dilution should be determined by the investigator.
Restrictions:	For Research Use only

## Handling

Format:	Lyophilized
Reconstitution:	Centrifuge the vial at 10,000 rpm for 1 minute, reconstitute at 200 µg/mL in sterile distilled water by gentle pipetting 2-3 times, don't vortex
Buffer:	Lyophilized from a 0.2 µm filtered solution in 10 mM Hepes, 500 mM NaCl with 5 % trehalose, pH 7.4
Storage:	4 °C, -20 °C
Storage Comment:	-20°C for 12 months as lyophilized, 2-8°C for 1 month under sterile conditions after reconstitution
Expiry Date:	12 months

## Images



### Western Blotting

Image 1.