

Datasheet for ABIN7122491

CKB Protein (AA 1-381) (His tag)[Go to Product page](#)**1** Image

Overview

Quantity:	50 µg
Target:	CKB
Protein Characteristics:	AA 1-381
Origin:	Human
Source:	Escherichia coli (E. coli)
Protein Type:	Recombinant
Purification tag / Conjugate:	This CKB protein is labelled with His tag.
Application:	Western Blotting (WB), ELISA

Product Details

Purity:	Greater than 95 % as determined by SDS-PAGE
Sterility:	0.2 µm filtered

Target Details

Target:	CKB
Alternative Name:	Creatine kinase B type (CKB Products)
Background:	B CK, B-CK, BB-CK, BCK, Brain creatine kinase, Ckb, CKBB, Creatine kinase B, Creatine kinase B chain, Creatine kinase B type, Creatine kinase B-type, Creatine Kinase BB Isoenzyme, Creatine kinase brain, Creatine kinase brain type, Creatine phosphokinase BB, Epididymis luminal protein 211
Molecular Weight:	41.8 kDa

Target Details

UniProt: [P12277](#)

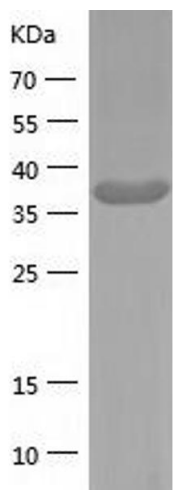
Application Details

Application Notes:	Optimal working dilution should be determined by the investigator.
Restrictions:	For Research Use only

Handling

Format:	Lyophilized
Reconstitution:	Centrifuge the vial at 10,000 rpm for 1 minute, reconstitute at 200 µg/mL in sterile distilled water by gentle pipetting 2-3 times, don't vortex
Buffer:	Lyophilized from a 0.2 µm filtered solution in 10 mM Hepes, 500 mM NaCl with 5 % trehalose, pH 7.4
Storage:	4 °C,-20 °C
Storage Comment:	-20°C for 12 months as lyophilized, 2-8°C for 1 month under sterile conditions after reconstitution
Expiry Date:	12 months

Images



Western Blotting

Image 1.