

Datasheet for ABIN7122587

**Cytohesin 2 Protein (CYTH2) (AA 1-399) (His tag)**[Go to Product page](#)**1** Image

## Overview

Quantity:	50 µg
Target:	Cytohesin 2 (CYTH2)
Protein Characteristics:	AA 1-399
Origin:	Human
Source:	Escherichia coli (E. coli)
Protein Type:	Recombinant
Purification tag / Conjugate:	This Cytohesin 2 protein is labelled with His tag.
Application:	Western Blotting (WB), ELISA

## Product Details

Purity:	Greater than 95 % as determined by SDS-PAGE
Sterility:	0.2 µm filtered

## Target Details

Target:	Cytohesin 2 (CYTH2)
Alternative Name:	Cytohesin 2 ( <a href="#">CYTH2 Products</a> )
Background:	ARF exchange factor, ARF nucleotide binding site opener, ARF nucleotide-binding site opener, Arno, ARNO protein, CLM2, CTS18, CTS18.1, CYH2_HUMAN, Cyth2, Cytohesin 2, Cytohesin-2, MGC137537, MGC80440, PH, PH, SEC7 and coiled-coil domain-containing protein 2
Molecular Weight:	43.8 kDa

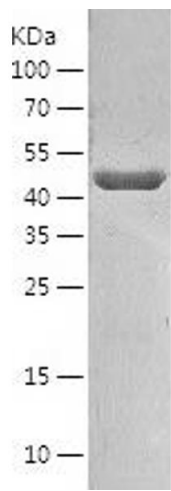
## Application Details

Application Notes:	Optimal working dilution should be determined by the investigator.
Restrictions:	For Research Use only

## Handling

Format:	Lyophilized
Reconstitution:	Centrifuge the vial at 10,000 rpm for 1 minute, reconstitute at 200 µg/mL in sterile distilled water by gentle pipetting 2-3 times, don't vortex
Buffer:	Lyophilized from a 0.2 µm filtered solution in 10 mM Hepes, 500 mM NaCl with 5 % trehalose, pH 7.4
Storage:	4 °C, -20 °C
Storage Comment:	-20°C for 12 months as lyophilized, 2-8°C for 1 month under sterile conditions after reconstitution
Expiry Date:	12 months

## Images



### Western Blotting

Image 1.