



[Go to Product page](#)

Datasheet for ABIN7122626

## DCC Protein (AA 841-941) (His tag)

### 1 Image

#### Overview

Quantity:	50 µg
Target:	DCC
Protein Characteristics:	AA 841-941
Origin:	Human
Source:	Escherichia coli (E. coli)
Protein Type:	Recombinant
Purification tag / Conjugate:	This DCC protein is labelled with His tag.
Application:	Western Blotting (WB), ELISA

#### Product Details

Purity:	Greater than 95 % as determined by SDS-PAGE
Sterility:	0.2 µm filtered

#### Target Details

Target:	DCC
Alternative Name:	DCC ( <a href="#">DCC Products</a> )
Background:	Colorectal cancer related chromosome sequence 18, Colorectal cancer suppressor, CRC 18, CRC18, CRCR 1, CRCR1, DCC, DCC_HUMAN, Deleted in colorectal cancer protein, Deleted in colorectal carcinoma, Immunoglobulin superfamily DCC subclass member 1, Netrin receptor DCC, Tumor suppressor protein DCC
Molecular Weight:	11 kDa

## Target Details

UniProt: [P43146](#)

Pathways: [Regulation of Cell Size](#)

## Application Details

Application Notes: Optimal working dilution should be determined by the investigator.

Restrictions: For Research Use only

## Handling

Format: Lyophilized

Reconstitution: Centrifuge the vial at 10,000 rpm for 1 minute, reconstitute at 200 µg/mL in sterile distilled water by gentle pipetting 2-3 times, don't vortex

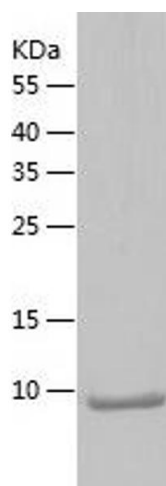
Buffer: Lyophilized from a 0.2 µm filtered solution in 10 mM Hepes, 500 mM NaCl with 5 % trehalose, pH 7.4

Storage: 4 °C, -20 °C

Storage Comment: -20°C for 12 months as lyophilized, 2-8°C for 1 month under sterile conditions after reconstitution

Expiry Date: 12 months

## Images



### Western Blotting

Image 1.