



[Go to Product page](#)

Datasheet for ABIN7122676

DIS3L2 Protein (AA 32-172) (His-IF2DI Tag)

1 Image

Overview

Quantity:	50 µg
Target:	DIS3L2
Protein Characteristics:	AA 32-172
Origin:	Human
Source:	Escherichia coli (E. coli)
Protein Type:	Recombinant
Purification tag / Conjugate:	This DIS3L2 protein is labelled with His-IF2DI Tag.
Application:	ELISA, Western Blotting (WB)

Product Details

Purity:	Greater than 95 % by SDS-PAGE gel analyses
Sterility:	0.2 µm filtered

Target Details

Target:	DIS3L2
Alternative Name:	DIS3L2 (DIS3L2 Products)
Background:	DIS3 like exonuclease 2, DIS3L2, FAM6A
Molecular Weight:	36.5 kDa
UniProt:	Q8IYB7
Pathways:	Stem Cell Maintenance

Application Details

Application Notes: Optimal working dilution should be determined by the investigator.

Restrictions: For Research Use only

Handling

Format: Lyophilized

Reconstitution: Centrifuge the vial at 10,000 rpm for 1 minute, reconstitute at 200 µg/mL in sterile distilled water by gentle pipetting 2-3 times, don't vortex

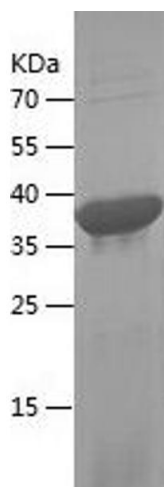
Buffer: Lyophilized from a 0.2 µm filtered solution in PBS with 5 % trehalose, pH 7.4

Storage: 4 °C,-20 °C

Storage Comment: -20°C for 12 months as lyophilized, 2-8°C for 1 month under sterile conditions after reconstitution

Expiry Date: 12 months

Images



Western Blotting

Image 1.