



[Go to Product page](#)

Datasheet for ABIN7122744

EDIL3 Protein (AA 16-470) (His tag)

1 Image

Overview

Quantity:	50 µg
Target:	EDIL3 (DEL1)
Protein Characteristics:	AA 16-470
Origin:	Human
Source:	Escherichia coli (E. coli)
Protein Type:	Recombinant
Purification tag / Conjugate:	This EDIL3 protein is labelled with His tag.
Application:	Western Blotting (WB), ELISA

Product Details

Purity:	Greater than 95 % as determined by SDS-PAGE
Sterility:	0.2 µm filtered

Target Details

Target:	EDIL3 (DEL1)
Alternative Name:	EDIL3 (DEL1 Products)
Background:	DEL1, Developmental endothelial locus 1, Developmentally regulated endothelial cell locus 1 protein, Developmentally-regulated endothelial cell locus 1 protein, Edil3, EDIL3_HUMAN, EGF like repeat and discoidin I like domain containing protein 3
Molecular Weight:	49.9 kDa

Application Details

Application Notes: Optimal working dilution should be determined by the investigator.

Restrictions: For Research Use only

Handling

Format: Lyophilized

Reconstitution: Centrifuge the vial at 10,000 rpm for 1 minute, reconstitute at 200 µg/mL in sterile distilled water by gentle pipetting 2-3 times, don't vortex

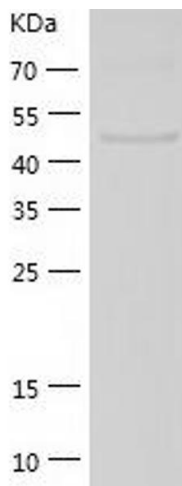
Buffer: Lyophilized from a 0.2 µm filtered solution in 10 mM Hepes, 500 mM NaCl with 5 % trehalose, pH 7.4

Storage: 4 °C, -20 °C

Storage Comment: -20°C for 12 months as lyophilized, 2-8°C for 1 month under sterile conditions after reconstitution

Expiry Date: 12 months

Images



Western Blotting

Image 1.