

Datasheet for ABIN7122786

ENO1 Protein (AA 2-433) (His tag)[Go to Product page](#)**1** Image

Overview

Quantity:	50 µg
Target:	ENO1
Protein Characteristics:	AA 2-433
Origin:	Mouse
Source:	Escherichia coli (E. coli)
Protein Type:	Recombinant
Purification tag / Conjugate:	This ENO1 protein is labelled with His tag.
Application:	Western Blotting (WB), ELISA

Product Details

Purity:	Greater than 95 % as determined by SDS-PAGE
Sterility:	0.2 µm filtered

Target Details

Target:	ENO1
Alternative Name:	ENO1 (ENO1 Products)
Background:	2 phospho D glycerate hydro lyase, 2-phospho-D-glycerate hydro-lyase, Alpha enolase, Alpha enolase like 1, Alpha-enolase, C myc promoter binding protein, C-myc promoter-binding protein, EC 4.2.1.11, eno1, ENO1L1, ENOA_HUMAN, Enolase 1, Enolase 1 (alpha), Enolase 1 (alpha) like 1
Molecular Weight:	47.4 kDa

Target Details

UniProt: [P17182](#)

Application Details

Application Notes: Optimal working dilution should be determined by the investigator.

Restrictions: For Research Use only

Handling

Format: Lyophilized

Reconstitution: Centrifuge the vial at 10,000 rpm for 1 minute, reconstitute at 200 µg/mL in sterile distilled water by gentle pipetting 2-3 times, don't vortex

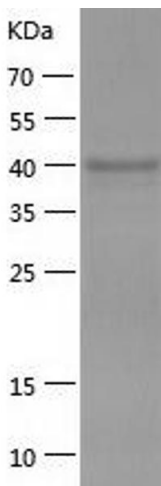
Buffer: Lyophilized from a 0.2 µm filtered solution in 10 mM Hepes, 500 mM NaCl with 5 % trehalose, pH 7.4

Storage: 4 °C,-20 °C

Storage Comment: -20°C for 12 months as lyophilized, 2-8°C for 1 month under sterile conditions after reconstitution

Expiry Date: 12 months

Images



Western Blotting

Image 1.