



[Go to Product page](#)

Datasheet for ABIN7122806

EpCAM Protein (AA 118-314) (His tag)

1 Image

Overview

Quantity:	50 µg
Target:	EpCAM (EPCAM)
Protein Characteristics:	AA 118-314
Origin:	Human
Source:	Escherichia coli (E. coli)
Protein Type:	Recombinant
Purification tag / Conjugate:	This EpCAM protein is labelled with His tag.
Application:	Western Blotting (WB), ELISA

Product Details

Purity:	Greater than 95 % by SDS-PAGE gel analyses
Sterility:	0.2 µm filtered

Target Details

Target:	EpCAM (EPCAM)
Alternative Name:	EPCAM (EPCAM Products)
Background:	17 1A, 323/A3, Adenocarcinoma associated antigen, Adenocarcinoma-associated antigen, Antigen identified by monoclonal antibody AUA1, AUA1, CD326, CD326 antigen, Cell surface glycoprotein Trop 1, Cell surface glycoprotein Trop 2, Cell surface glycoprotein Trop-1
Molecular Weight:	24.3 kDa

Target Details

UniProt: [P16422](#)

Application Details

Application Notes: Optimal working dilution should be determined by the investigator.

Restrictions: For Research Use only

Handling

Format: Lyophilized

Reconstitution: Centrifuge the vial at 10,000 rpm for 1 minute, reconstitute at 200 µg/mL in sterile distilled water by gentle pipetting 2-3 times, don't vortex

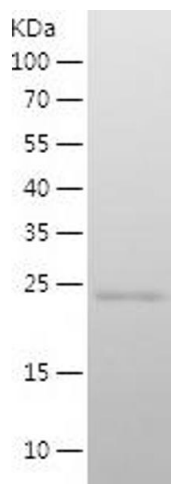
Buffer: Lyophilized from a 0.2 µm filtered solution in PBS with 5 % trehalose, pH 7.4

Storage: 4 °C, -20 °C

Storage Comment: -20°C for 12 months as lyophilized, 2-8°C for 1 month under sterile conditions after reconstitution

Expiry Date: 12 months

Images



Western Blotting

Image 1.