



[Go to Product page](#)

Datasheet for ABIN7122827

EEF1A2 Protein (AA 373-463) (His-IF2DI Tag)

1 Image

Overview

Quantity:	50 µg
Target:	EEF1A2
Protein Characteristics:	AA 373-463
Origin:	Human
Source:	Escherichia coli (E. coli)
Protein Type:	Recombinant
Purification tag / Conjugate:	This EEF1A2 protein is labelled with His-IF2DI Tag.
Application:	Western Blotting (WB), ELISA

Product Details

Purity:	Greater than 95 % by SDS-PAGE gel analyses
Sterility:	0.2 µm filtered

Target Details

Target:	EEF1A2
Alternative Name:	EEF1A2 (EEF1A2 Products)
Background:	EEF1A 2, EEF1A2, EEF1AL, EF 1 alpha 2, EF1A, Elongation factor 1 alpha 2, HS1, Statin S1, STN, STNL
Molecular Weight:	30 kDa
UniProt:	Q05639

Application Details

Application Notes: Optimal working dilution should be determined by the investigator.

Restrictions: For Research Use only

Handling

Format: Lyophilized

Reconstitution: Centrifuge the vial at 10,000 rpm for 1 minute, reconstitute at 200 µg/mL in sterile distilled water by gentle pipetting 2-3 times, don't vortex

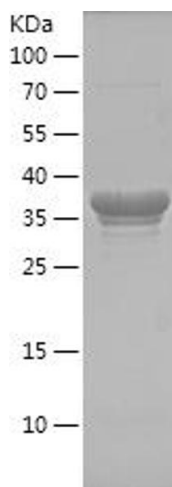
Buffer: Lyophilized from a 0.2 µm filtered solution in PBS with 5 % trehalose, pH 7.4

Storage: 4 °C,-20 °C

Storage Comment: -20°C for 12 months as lyophilized, 2-8°C for 1 month under sterile conditions after reconstitution

Expiry Date: 12 months

Images



Western Blotting

Image 1.