

Datasheet for ABIN7122904

FCRL6 Protein (AA 20-307) (His tag)[Go to Product page](#)**1** Image

Overview

Quantity:	50 µg
Target:	FCRL6
Protein Characteristics:	AA 20-307
Origin:	Human
Source:	Escherichia coli (E. coli)
Protein Type:	Recombinant
Purification tag / Conjugate:	This FCRL6 protein is labelled with His tag.
Application:	ELISA, Western Blotting (WB)

Product Details

Purity:	Greater than 95 % as determined by SDS-PAGE
Sterility:	0.2 µm filtered

Target Details

Target:	FCRL6
Alternative Name:	FCRL6 (FCRL6 Products)
Background:	Fc receptor homolog 6, Fc receptor-like 6, Fc receptor-like protein 6, Fc receptor-like protein 7, FcR-like protein 6, FcRH6, FcRL6, FCRL6_HUMAN, FLJ16056, IFGP6, IgSF type I transmembrane receptor, leukocyte receptor
Molecular Weight:	31.6 kDa

Target Details

UniProt: [Q6DN72](#)

Application Details

Application Notes: Optimal working dilution should be determined by the investigator.

Restrictions: For Research Use only

Handling

Format: Lyophilized

Reconstitution: Centrifuge the vial at 10,000 rpm for 1 minute, reconstitute at 200 µg/mL in sterile distilled water by gentle pipetting 2-3 times, don't vortex

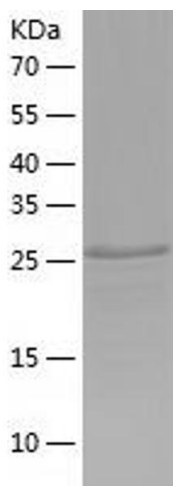
Buffer: Lyophilized from a 0.2 µm filtered solution in 10 mM Hepes, 500 mM NaCl with 5 % trehalose, pH 7.4

Storage: 4 °C, -20 °C

Storage Comment: -20°C for 12 months as lyophilized, 2-8°C for 1 month under sterile conditions after reconstitution

Expiry Date: 12 months

Images



Western Blotting

Image 1.