

Datasheet for ABIN7123086
GIPC1 Protein (AA 1-333) (His tag)



[Go to Product page](#)

1 Image

Overview

Quantity:	50 µg
Target:	GIPC1
Protein Characteristics:	AA 1-333
Origin:	Human
Source:	Escherichia coli (E. coli)
Protein Type:	Recombinant
Purification tag / Conjugate:	This GIPC1 protein is labelled with His tag.
Application:	Western Blotting (WB), ELISA

Product Details

Purity:	Greater than 95 % as determined by SDS-PAGE
Sterility:	0.2 µm filtered

Target Details

Target:	GIPC1
Alternative Name:	GIPC1 (GIPC1 Products)
Background:	C19ORF3, Chromosome 19 open reading frame 3, GAIP C-terminus-interacting protein, GIPC, GIPC PDZ domain containing family member 1, GLUT1 C terminal binding protein, GLUT1CBP, Hs.6454, IGF 1 receptor interacting protein 1, IIP 1, IIP1, NIP, PDZ domain-containing protein GIPC1
Molecular Weight:	36.5 kDa

Target Details

UniProt: [O14908](#)

Pathways: [Dicarboxylic Acid Transport](#)

Application Details

Application Notes: Optimal working dilution should be determined by the investigator.

Restrictions: For Research Use only

Handling

Format: Lyophilized

Reconstitution: Centrifuge the vial at 10,000 rpm for 1 minute, reconstitute at 200 µg/mL in sterile distilled water by gentle pipetting 2-3 times, don't vortex

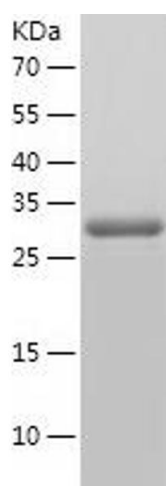
Buffer: Lyophilized from a 0.2 µm filtered solution in 10 mM Hepes, 500 mM NaCl with 5 % trehalose, pH 7.4

Storage: 4 °C, -20 °C

Storage Comment: -20°C for 12 months as lyophilized, 2-8°C for 1 month under sterile conditions after reconstitution

Expiry Date: 12 months

Images



Western Blotting

Image 1.