



[Go to Product page](#)

Datasheet for ABIN7123087

GIPC2 Protein (AA 1-315) (His tag)

1 Image

Overview

Quantity:	50 µg
Target:	GIPC2
Protein Characteristics:	AA 1-315
Origin:	Human
Source:	Escherichia coli (E. coli)
Protein Type:	Recombinant
Purification tag / Conjugate:	This GIPC2 protein is labelled with His tag.
Application:	ELISA, Western Blotting (WB)

Product Details

Purity:	Greater than 95 % by SDS-PAGE gel analyses
Sterility:	0.2 µm filtered

Target Details

Target:	GIPC2
Alternative Name:	GIPC2 (GIPC2 Products)
Background:	GIPC 2, GIPC PDZ domain containing family, member 2, GIPC2, GIPC2_HUMAN, Likely ortholog of mouse semaF cytoplasmic domain associated protein 2, PDZ domain protein GIPC2, PDZ domain-containing protein GIPC2, SemaF cytoplasmic domain associated protein 2
Molecular Weight:	36.2 kDa

Target Details

UniProt: [Q8TF65](#)

Application Details

Application Notes: Optimal working dilution should be determined by the investigator.

Restrictions: For Research Use only

Handling

Format: Lyophilized

Reconstitution: Centrifuge the vial at 10,000 rpm for 1 minute, reconstitute at 200 µg/mL in sterile distilled water by gentle pipetting 2-3 times, don't vortex

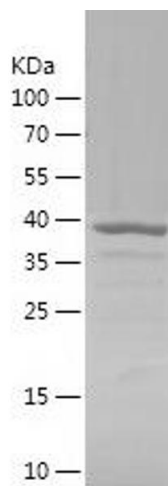
Buffer: Lyophilized from a 0.2 µm filtered solution in PBS with 5 % trehalose, pH 7.4

Storage: 4 °C, -20 °C

Storage Comment: -20°C for 12 months as lyophilized, 2-8°C for 1 month under sterile conditions after reconstitution

Expiry Date: 12 months

Images



Western Blotting

Image 1.