

## Datasheet for ABIN7123106 GPI Protein (AA 357-558) (His tag)

[Go to Product page](#)

### 1 Image

#### Overview

Quantity:	50 µg
Target:	GPI
Protein Characteristics:	AA 357-558
Origin:	Human
Source:	Escherichia coli (E. coli)
Protein Type:	Recombinant
Purification tag / Conjugate:	This GPI protein is labelled with His tag.
Application:	ELISA, Western Blotting (WB)

#### Product Details

Purity:	Greater than 95 % by SDS-PAGE gel analyses
Sterility:	0.2 µm filtered

#### Target Details

Target:	GPI
Alternative Name:	GPI ( <a href="#">GPI Products</a> )
Target Type:	Viral Protein
Background:	AMF, Aurocrine motility factor, Autocrine motility factor, DKFZp686C13233, EC 5.3.1.9, G6PI_HUMAN, Glucose phosphate isomerase, Glucose-6-phosphate isomerase, GNPI, GPI, Gpi1, Hexose monophosphate isomerase, Hexosephosphate isomerase, Neuroleukin, NLK, Oxoisomerase

### Target Details

Molecular Weight:	24.6 kDa
UniProt:	<a href="#">P06744</a>

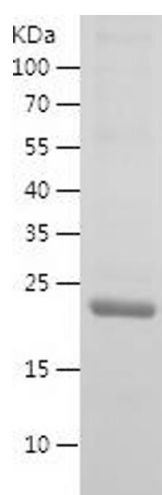
### Application Details

Application Notes:	Optimal working dilution should be determined by the investigator.
Restrictions:	For Research Use only

### Handling

Format:	Lyophilized
Reconstitution:	Centrifuge the vial at 10,000 rpm for 1 minute, reconstitute at 200 µg/mL in sterile distilled water by gentle pipetting 2-3 times, don't vortex
Buffer:	Lyophilized from a 0.2 µm filtered solution in PBS with 5 % trehalose, pH 7.4
Storage:	4 °C,-20 °C
Storage Comment:	-20°C for 12 months as lyophilized, 2-8°C for 1 month under sterile conditions after reconstitution
Expiry Date:	12 months

### Images



Western Blotting

Image 1.