



[Go to Product page](#)

Datasheet for ABIN7123107

GBA Protein (AA 362-512) (His-IF2DI Tag)

1 Image

Overview

Quantity:	50 µg
Target:	GBA
Protein Characteristics:	AA 362-512
Origin:	Human
Source:	Escherichia coli (E. coli)
Protein Type:	Recombinant
Purification tag / Conjugate:	This GBA protein is labelled with His-IF2DI Tag.
Application:	Western Blotting (WB), ELISA

Product Details

Purity:	Greater than 95 % by SDS-PAGE gel analyses
Sterility:	0.2 µm filtered

Target Details

Target:	GBA
Alternative Name:	GBA (GBA Products)
Background:	Acid beta glucosidase, Alglucerase, Beta glucocerebrosidase, GBA, GBA1, GC, GCB, GLUC, Glucosylceramidase, Imiglucerase
Molecular Weight:	37.6 kDa
UniProt:	P04062

Target Details

Pathways: [Cellular Glucan Metabolic Process](#)

Application Details

Application Notes: Optimal working dilution should be determined by the investigator.

Restrictions: For Research Use only

Handling

Format: Lyophilized

Reconstitution: Centrifuge the vial at 10,000 rpm for 1 minute, reconstitute at 200 µg/mL in sterile distilled water by gentle pipetting 2-3 times, don't vortex

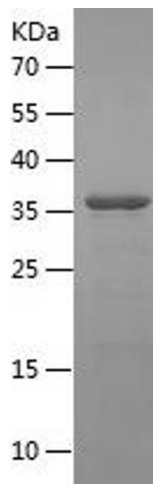
Buffer: Lyophilized from a 0.2 µm filtered solution in PBS with 5 % trehalose, pH 7.4

Storage: 4 °C, -20 °C

Storage Comment: -20°C for 12 months as lyophilized, 2-8°C for 1 month under sterile conditions after reconstitution

Expiry Date: 12 months

Images



Western Blotting

Image 1.