



[Go to Product page](#)

Datasheet for ABIN7123119

Glutaminase Protein (GLS) (AA 609-669) (His-IF2DI Tag)

1 Image

Overview

Quantity:	50 µg
Target:	Glutaminase (GLS)
Protein Characteristics:	AA 609-669
Origin:	Human
Source:	Escherichia coli (E. coli)
Protein Type:	Recombinant
Purification tag / Conjugate:	This Glutaminase protein is labelled with His-IF2DI Tag.
Application:	Western Blotting (WB), ELISA

Product Details

Purity:	Greater than 95 % by SDS-PAGE gel analyses
Sterility:	0.2 µm filtered

Target Details

Target:	Glutaminase (GLS)
Alternative Name:	GLS (GLS Products)
Background:	AAD20, EC 3.5.1.2, GLS, GLS1DKFZp686015119, glutaminase C, glutaminase kidney isoform, mitochondrial, Glutaminase, glutaminase, phosphate-activated, K-Glutaminase, KIAA0838FLJ10358, L-Glutamine Amidohydrolase
Molecular Weight:	27.7 kDa

Target Details

UniProt: [O94925](#)

Pathways: [Feeding Behaviour](#), [Dicarboxylic Acid Transport](#), [Warburg Effect](#)

Application Details

Application Notes: Optimal working dilution should be determined by the investigator.

Restrictions: For Research Use only

Handling

Format: Lyophilized

Reconstitution: Centrifuge the vial at 10,000 rpm for 1 minute, reconstitute at 200 µg/mL in sterile distilled water by gentle pipetting 2-3 times, don't vortex

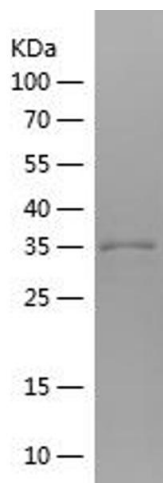
Buffer: Lyophilized from a 0.2 µm filtered solution in PBS with 5 % trehalose, pH 7.4

Storage: 4 °C, -20 °C

Storage Comment: -20°C for 12 months as lyophilized, 2-8°C for 1 month under sterile conditions after reconstitution

Expiry Date: 12 months

Images



Western Blotting

Image 1.