

Datasheet for ABIN7123160

GCSH Protein (AA 49-173) (His tag)[Go to Product page](#)**1** Image

Overview

Quantity:	50 µg
Target:	GCSH
Protein Characteristics:	AA 49-173
Origin:	Human
Source:	Escherichia coli (E. coli)
Protein Type:	Recombinant
Purification tag / Conjugate:	This GCSH protein is labelled with His tag.
Application:	ELISA, Western Blotting (WB)

Product Details

Purity:	Greater than 95 % as determined by SDS-PAGE
Sterility:	0.2 µm filtered

Target Details

Target:	GCSH
Alternative Name:	GCSH (GCSH Products)
Background:	GCE, GCSH, GCSH_HUMAN, Glycine cleavage system H protein, Glycine cleavage system H protein mitochondrial, Glycine cleavage system protein H, Glycine cleavage system protein H (aminomethyl carrier), Lipoic acid containing protein, mitochondrial, Mitochondrial glycine cleavage system H protein, NKH
Molecular Weight:	13.6 kDa

Target Details

UniProt: [P23434](#)

Application Details

Application Notes: Optimal working dilution should be determined by the investigator.

Restrictions: For Research Use only

Handling

Format: Lyophilized

Reconstitution: Centrifuge the vial at 10,000 rpm for 1 minute, reconstitute at 200 µg/mL in sterile distilled water by gentle pipetting 2-3 times, don't vortex

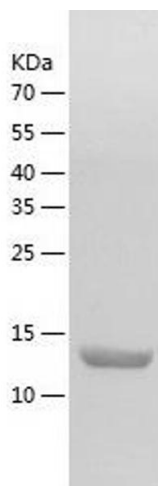
Buffer: Lyophilized from a 0.2 µm filtered solution in 10 mM Hepes, 500 mM NaCl with 5 % trehalose, pH 7.4

Storage: 4 °C,-20 °C

Storage Comment: -20°C for 12 months as lyophilized, 2-8°C for 1 month under sterile conditions after reconstitution

Expiry Date: 12 months

Images



Western Blotting

Image 1.