



[Go to Product page](#)

Datasheet for ABIN7123166

CD236/GYPC Protein (AA 1-128) (His-IF2DI Tag)

1 Image

Overview

Quantity:	50 µg
Target:	CD236/GYPC (GYPC)
Protein Characteristics:	AA 1-128
Origin:	Human
Source:	Escherichia coli (E. coli)
Protein Type:	Recombinant
Purification tag / Conjugate:	This CD236/GYPC protein is labelled with His-IF2DI Tag.
Application:	Western Blotting (WB), ELISA

Product Details

Purity:	Greater than 95 % by SDS-PAGE gel analyses
Sterility:	0.2 µm filtered

Target Details

Target:	CD236/GYPC (GYPC)
Alternative Name:	GYPC (GYPC Products)
Target Type:	Viral Protein
Background:	CD236, CD236R, GE, GLPC, GLPC_HUMAN, Glycoconnectin, Glycophorin C (Gerbich blood group), Glycophorin D, Glycophorin-C, Glycophorin-D, Glycoprotein beta, GPC, GPD, Gypc, GYPD, MGC117309, MGC126191, MGC126192, PAS 2, PAS 2', PAS-2", Sialoglycoprotein D

Target Details

Molecular Weight: 34.5 kDa

UniProt: [P04921](#)

Application Details

Application Notes: Optimal working dilution should be determined by the investigator.

Restrictions: For Research Use only

Handling

Format: Lyophilized

Reconstitution: Centrifuge the vial at 10,000 rpm for 1 minute, reconstitute at 200 µg/mL in sterile distilled water by gentle pipetting 2-3 times, don't vortex

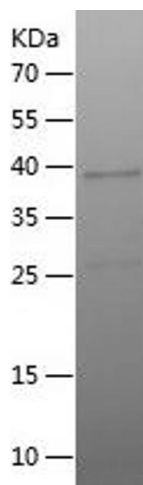
Buffer: Lyophilized from a 0.2 µm filtered solution in PBS with 5 % trehalose, pH 7.4

Storage: 4 °C, -20 °C

Storage Comment: -20°C for 12 months as lyophilized, 2-8°C for 1 month under sterile conditions after reconstitution

Expiry Date: 12 months

Images



Western Blotting

Image 1.