



[Go to Product page](#)

Datasheet for ABIN7123167

CGA Protein (AA 25-116) (His-IF2DI Tag)

1 Image

Overview

Quantity:	50 µg
Target:	CGA
Protein Characteristics:	AA 25-116
Origin:	Human
Source:	Escherichia coli (E. coli)
Protein Type:	Recombinant
Purification tag / Conjugate:	This CGA protein is labelled with His-IF2DI Tag.
Application:	ELISA, Western Blotting (WB)

Product Details

Purity:	Greater than 95 % by SDS-PAGE gel analyses
Sterility:	0.2 µm filtered

Target Details

Target:	CGA
Alternative Name:	CGA (CGA Products)
Background:	Anterior pituitary glycoprotein hormones common subunit alpha, CG alpha, CG-alpha, cga, Choriogonadotropin alpha chain, Chorionic Gonadotrophin Alpha, Chorionic Gonadotrophin Alpha Subunit, Chorionic gonadotrophin subunit alpha, chorionic gonadotropin
Molecular Weight:	30.8 kDa

Target Details

UniProt: [P01215](#)

Pathways: [Metabolism of Steroid Hormones and Vitamin D](#), [Thyroid Hormone Synthesis](#), [Hormone Transport](#), [Peptide Hormone Metabolism](#)

Application Details

Application Notes: Optimal working dilution should be determined by the investigator.

Restrictions: For Research Use only

Handling

Format: Lyophilized

Reconstitution: Centrifuge the vial at 10,000 rpm for 1 minute, reconstitute at 200 µg/mL in sterile distilled water by gentle pipetting 2-3 times, don't vortex

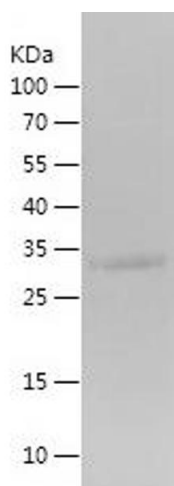
Buffer: Lyophilized from a 0.2 µm filtered solution in PBS with 5 % trehalose, pH 7.4

Storage: 4 °C, -20 °C

Storage Comment: -20°C for 12 months as lyophilized, 2-8°C for 1 month under sterile conditions after reconstitution

Expiry Date: 12 months

Images



Western Blotting

Image 1.