



[Go to Product page](#)

Datasheet for ABIN7123180

GOLM1 Protein (AA 101-401) (His tag)

1 Image

Overview

Quantity:	50 µg
Target:	GOLM1
Protein Characteristics:	AA 101-401
Origin:	Human
Source:	Escherichia coli (E. coli)
Protein Type:	Recombinant
Purification tag / Conjugate:	This GOLM1 protein is labelled with His tag.
Application:	Western Blotting (WB), ELISA

Product Details

Purity:	Greater than 95 % by SDS-PAGE gel analyses
Sterility:	0.2 µm filtered

Target Details

Target:	GOLM1
Alternative Name:	GP73 (GOLM1 Products)
Background:	BA379P1.3, C9orf155, Chromosome 9 open reading frame 155, Golgi membrane protein 1, Golgi membrane protein GP73, Golgi phosphoprotein 2, Golgi protein 73 kD, Golgi protein 73kD, GOLM 1, GOLM1, GOLM1_HUMAN, GOLPH 2, GOLPH2, GP 73, GP73, PSEC0257
Molecular Weight:	35.9 kDa

Target Details

UniProt: [Q8NBJ4](#)

Application Details

Application Notes: Optimal working dilution should be determined by the investigator.

Restrictions: For Research Use only

Handling

Format: Lyophilized

Reconstitution: Centrifuge the vial at 10,000 rpm for 1 minute, reconstitute at 200 µg/mL in sterile distilled water by gentle pipetting 2-3 times, don't vortex

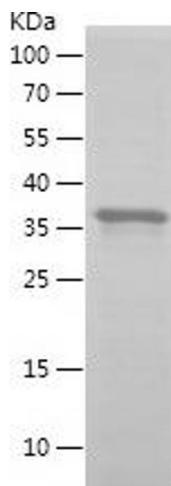
Buffer: Lyophilized from a 0.2 µm filtered solution in PBS with 5 % trehalose, pH 7.4

Storage: 4 °C, -20 °C

Storage Comment: -20°C for 12 months as lyophilized, 2-8°C for 1 month under sterile conditions after reconstitution

Expiry Date: 12 months

Images



Western Blotting

Image 1.