



[Go to Product page](#)

Datasheet for ABIN7123188

Golgin B1 (GOLGB1) (AA 3007-3192) protein (His-IF2DI Tag)

1 Image

Overview

Quantity:	50 µg
Target:	Golgin B1 (GOLGB1)
Protein Characteristics:	AA 3007-3192
Origin:	Human
Source:	Escherichia coli (E. coli)
Protein Type:	Recombinant
Purification tag / Conjugate:	His-IF2DI Tag
Application:	ELISA, Western Blotting (WB)

Product Details

Purity:	Greater than 90 % by SDS-PAGE gel analyses
Sterility:	0.2 µm filtered

Target Details

Target:	Golgin B1 (GOLGB1)
Alternative Name:	GOLGB1 (GOLGB1 Products)
Background:	372 kDa Golgi complex associated protein, 372 kDa Golgi complex-associated protein, GCP, GCP372, Giantin, GOGB1_HUMAN, GOLGB1, Golgi autoantigen golgin subfamily a member 1, Golgi autoantigen golgin subfamily b macrogolgin (with transmembrane signal) 1, Golgi autoantigen
Molecular Weight:	42.0 kDa

Target Details

UniProt: [Q14789](#)

Pathways: [SARS-CoV-2 Protein Interactome](#)

Application Details

Application Notes: Optimal working dilution should be determined by the investigator.

Restrictions: For Research Use only

Handling

Format: Lyophilized

Reconstitution: Centrifuge the vial at 10,000 rpm for 1 minute, reconstitute at 200 µg/mL in sterile distilled water by gentle pipetting 2-3 times, don't vortex

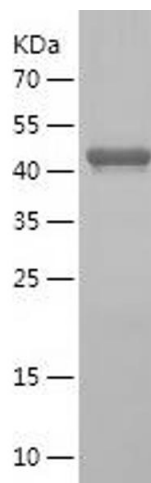
Buffer: Lyophilized from a 0.2 µm filtered solution in PBS with 5 % trehalose, pH 7.4

Storage: 4 °C, -20 °C

Storage Comment: -20°C for 12 months as lyophilized, 2-8°C for 1 month under sterile conditions after reconstitution

Expiry Date: 12 months

Images



Western Blotting

Image 1.