

Datasheet for ABIN7123200
GRAP2 Protein (AA 1-330) (His tag)[Go to Product page](#)

1 Image

Overview

Quantity:	50 µg
Target:	GRAP2
Protein Characteristics:	AA 1-330
Origin:	Human
Source:	Escherichia coli (E. coli)
Protein Type:	Recombinant
Purification tag / Conjugate:	This GRAP2 protein is labelled with His tag.
Application:	Western Blotting (WB), ELISA

Product Details

Purity:	Greater than 95 % as determined by SDS-PAGE
Sterility:	0.2 µm filtered

Target Details

Target:	GRAP2
Alternative Name:	GRAP2 (GRAP2 Products)
Background:	Adapter protein GRID, GADS, GADS protein, GRAP-2, Grap2, GRAP2_HUMAN, GRB-2-like protein, GRB2-related adapter protein 2, GRB2-related adaptor protein 2, GRB2-related protein with insert domain, GRB2L, GRBLG, GRBX, Grf-40, Grf40, Grf40 adapter protein, GRID
Molecular Weight:	36.2 kDa

Target Details

UniProt:	O75791
Pathways:	TCR Signaling, Fc-epsilon Receptor Signaling Pathway

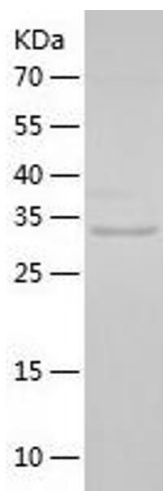
Application Details

Application Notes:	Optimal working dilution should be determined by the investigator.
Restrictions:	For Research Use only

Handling

Format:	Lyophilized
Reconstitution:	Centrifuge the vial at 10,000 rpm for 1 minute, reconstitute at 200 µg/mL in sterile distilled water by gentle pipetting 2-3 times, don't vortex
Buffer:	Lyophilized from a 0.2 µm filtered solution in 10 mM Hepes, 500 mM NaCl with 5 % trehalose, pH 7.4
Storage:	4 °C,-20 °C
Storage Comment:	-20°C for 12 months as lyophilized, 2-8°C for 1 month under sterile conditions after reconstitution
Expiry Date:	12 months

Images



Western Blotting

Image 1.