



[Go to Product page](#)

Datasheet for ABIN7123230

K-RAS Protein (AA 1-186) (His tag)

1 Image

Overview

Quantity:	50 µg
Target:	K-RAS (KRAS)
Protein Characteristics:	AA 1-186
Origin:	Human
Source:	Escherichia coli (E. coli)
Protein Type:	Recombinant
Purification tag / Conjugate:	This K-RAS protein is labelled with His tag.
Application:	Western Blotting (WB), ELISA

Product Details

Purity:	Greater than 95 % as determined by SDS-PAGE
Sterility:	0.2 µm filtered

Target Details

Target:	K-RAS (KRAS)
Alternative Name:	KRAS (KRAS Products)
Target Type:	Viral Protein
Background:	C Ki ras2, c Kirsten ras protein, c-K-ras, c-Ki-ras, Cellular c Ki ras2 proto oncogene, Cellular transforming proto oncogene, CFC2, cK Ras, GTPase KRas, K RAS p21 protein, K RAS2A, K RAS2B, K RAS4A, K RAS4B, K-Ras 2, KI RAS, Ki-Ras, KIRSTEN MURINE SARCOMA VIRUS 2

Target Details

Molecular Weight: 20.4 kDa

UniProt: [P01116](#)

Application Details

Application Notes: Optimal working dilution should be determined by the investigator.

Restrictions: For Research Use only

Handling

Format: Lyophilized

Reconstitution: Centrifuge the vial at 10,000 rpm for 1 minute, reconstitute at 200 µg/mL in sterile distilled water by gentle pipetting 2-3 times, don't vortex

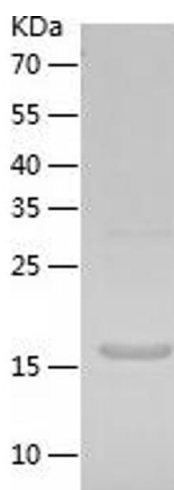
Buffer: Lyophilized from a 0.2 µm filtered solution in 10 mM Hepes, 500 mM NaCl with 5 % trehalose, pH 7.4

Storage: 4 °C, -20 °C

Storage Comment: -20°C for 12 months as lyophilized, 2-8°C for 1 month under sterile conditions after reconstitution

Expiry Date: 12 months

Images



Western Blotting

Image 1.