

Datasheet for ABIN7123240

**GNB2L1 Protein (AA 1-317) (His tag)**[Go to Product page](#)**1** Image

## Overview

Quantity:	50 µg
Target:	GNB2L1
Protein Characteristics:	AA 1-317
Origin:	Human
Source:	Escherichia coli (E. coli)
Protein Type:	Recombinant
Purification tag / Conjugate:	This GNB2L1 protein is labelled with His tag.
Application:	ELISA, Western Blotting (WB)

## Product Details

Purity:	Greater than 95 % as determined by SDS-PAGE
Sterility:	0.2 µm filtered

## Target Details

Target:	GNB2L1
Alternative Name:	RACK1 ( <a href="#">GNB2L1 Products</a> )
Background:	Cell proliferation-inducing gene 21 protein, GBLP_HUMAN, Gnb2-rs1, Gnb2l1, Guanine nucleotide binding protein (G protein) beta polypeptide 2 like 1, Guanine nucleotide binding protein beta polypeptide 2 like 1, Guanine nucleotide binding protein beta subunit 2 like 1
Molecular Weight:	34.8 kDa

## Target Details

UniProt:	<a href="#">P63244</a>
Pathways:	<a href="#">cAMP Metabolic Process</a> , <a href="#">Positive Regulation of Endopeptidase Activity</a>

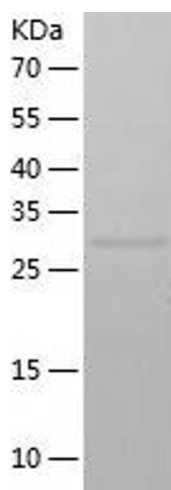
## Application Details

Application Notes:	Optimal working dilution should be determined by the investigator.
Restrictions:	For Research Use only

## Handling

Format:	Lyophilized
Reconstitution:	Centrifuge the vial at 10,000 rpm for 1 minute, reconstitute at 200 µg/mL in sterile distilled water by gentle pipetting 2-3 times, don't vortex
Buffer:	Lyophilized from a 0.2 µm filtered solution in 10 mM Hepes, 500 mM NaCl with 5 % trehalose, pH 7.4
Storage:	4 °C,-20 °C
Storage Comment:	-20°C for 12 months as lyophilized, 2-8°C for 1 month under sterile conditions after reconstitution
Expiry Date:	12 months

## Images



### Western Blotting

Image 1.