



[Go to Product page](#)

Datasheet for ABIN7123286

HN1L Protein (AA 1-190) (His tag)

1 Image

Overview

Quantity:	50 µg
Target:	HN1L
Protein Characteristics:	AA 1-190
Origin:	Human
Source:	Escherichia coli (E. coli)
Protein Type:	Recombinant
Purification tag / Conjugate:	This HN1L protein is labelled with His tag.
Application:	ELISA, Western Blotting (WB)

Product Details

Purity:	Greater than 95 % as determined by SDS-PAGE
Sterility:	0.2 µm filtered

Target Details

Target:	HN1L
Alternative Name:	HN1L (HN1L Products)
Background:	C16orf34, Chromosome 16 open reading frame 34, CRAMP1 like, FLJ13092, Hematological and neurological expressed 1 like, Hematological and neurological expressed 1 like protein, Hematological and neurological expressed 1-like protein, HN1 like, HN1 like protein, HN1-like protein, Hn1l, HN1L_HUMAN, L11
Molecular Weight:	20.8 kDa

Target Details

UniProt: [Q9H910](#)

Application Details

Application Notes: Optimal working dilution should be determined by the investigator.

Restrictions: For Research Use only

Handling

Format: Lyophilized

Reconstitution: Centrifuge the vial at 10,000 rpm for 1 minute, reconstitute at 200 µg/mL in sterile distilled water by gentle pipetting 2-3 times, don't vortex

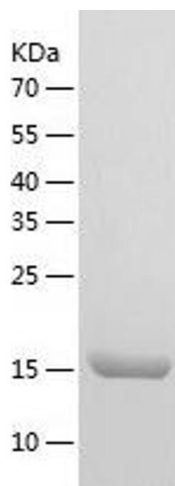
Buffer: Lyophilized from a 0.2 µm filtered solution in 10 mM Hepes, 500 mM NaCl with 5 % trehalose, pH 7.4

Storage: 4 °C, -20 °C

Storage Comment: -20°C for 12 months as lyophilized, 2-8°C for 1 month under sterile conditions after reconstitution

Expiry Date: 12 months

Images



Western Blotting

Image 1.