



[Go to Product page](#)

Datasheet for ABIN7123300

## Heparanase 2 Protein (HPSE2) (AA 218-498) (His tag)

### 1 Image

#### Overview

Quantity:	50 µg
Target:	Heparanase 2 (HPSE2)
Protein Characteristics:	AA 218-498
Origin:	Human
Source:	Escherichia coli (E. coli)
Protein Type:	Recombinant
Purification tag / Conjugate:	This Heparanase 2 protein is labelled with His tag.
Application:	ELISA, Western Blotting (WB)

#### Product Details

Purity:	Greater than 95 % as determined by SDS-PAGE
Sterility:	0.2 µm filtered

#### Target Details

Target:	Heparanase 2 (HPSE2)
Alternative Name:	HPSE2 ( <a href="#">HPSE2 Products</a> )
Background:	FLJ11684, FLJ44022, heparanase 2, heparanase 3, heparanase-like protein, Hpa2, HPR2, HPSE2, HPSE2_HUMAN, Inactive heparanase-2, MGC133234, UFS
Molecular Weight:	30.8 kDa
UniProt:	<a href="#">Q2M1H9</a>

## Target Details

---

Pathways: [Glycosaminoglycan Metabolic Process](#)

## Application Details

---

Application Notes: Optimal working dilution should be determined by the investigator.

Restrictions: For Research Use only

## Handling

---

Format: Lyophilized

Reconstitution: Centrifuge the vial at 10,000 rpm for 1 minute, reconstitute at 200 µg/mL in sterile distilled water by gentle pipetting 2-3 times, don't vortex

Buffer: Lyophilized from a 0.2 µm filtered solution in 10 mM Hepes, 500 mM NaCl with 5 % trehalose, pH 7.4

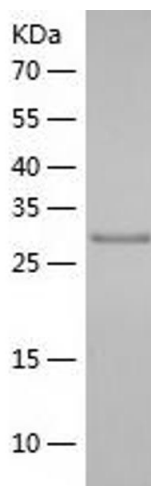
Storage: 4 °C,-20 °C

Storage Comment: -20°C for 12 months as lyophilized, 2-8°C for 1 month under sterile conditions after reconstitution

Expiry Date: 12 months

## Images

---



### Western Blotting

Image 1.