



[Go to Product page](#)

Datasheet for ABIN7123353

HLA-DR Protein (HLA-DR) (AA 26-216) (His tag)

1 Image

Overview

Quantity:	50 µg
Target:	HLA-DR
Protein Characteristics:	AA 26-216
Origin:	Human
Source:	Escherichia coli (E. coli)
Protein Type:	Recombinant
Purification tag / Conjugate:	This HLA-DR protein is labelled with His tag.
Application:	ELISA, Western Blotting (WB)

Product Details

Purity:	Greater than 95 % as determined by SDS-PAGE
Sterility:	0.2 µm filtered

Target Details

Target:	HLA-DR
Alternative Name:	HLA-DR (HLA-DR Products)
Background:	DASS-397D15.1, DR alpha chain, DR alpha chain precursor, DRA_HUMAN, DRB1, DRB4, FLJ51114, Histocompatibility antigen HLA DR alpha, Histocompatibility antigen HLA-DR alpha, HLA class II histocompatibility antigen, HLA class II histocompatibility antigen DR alpha chain, HLA DR1B, HLA DR3B
Molecular Weight:	20.9 kDa

Target Details

UniProt: [P01903](#)

Pathways: [Human Leukocyte Antigen \(HLA\) in Adaptive Immune Response](#)

Application Details

Application Notes: Optimal working dilution should be determined by the investigator.

Restrictions: For Research Use only

Handling

Format: Lyophilized

Reconstitution: Centrifuge the vial at 10,000 rpm for 1 minute, reconstitute at 200 µg/mL in sterile distilled water by gentle pipetting 2-3 times, don't vortex

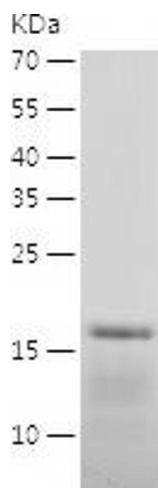
Buffer: Lyophilized from a 0.2 µm filtered solution in 10 mM Hepes, 500 mM NaCl with 5 % trehalose, pH 7.4

Storage: 4 °C, -20 °C

Storage Comment: -20°C for 12 months as lyophilized, 2-8°C for 1 month under sterile conditions after reconstitution

Expiry Date: 12 months

Images



Western Blotting

Image 1.