

Datasheet for ABIN7123366

HTRA2 Protein (AA 133-358) (His tag)[Go to Product page](#)**1** Image

Overview

Quantity:	50 µg
Target:	HTRA2
Protein Characteristics:	AA 133-358
Origin:	Human
Source:	Escherichia coli (E. coli)
Protein Type:	Recombinant
Purification tag / Conjugate:	This HTRA2 protein is labelled with His tag.
Application:	ELISA, Western Blotting (WB)

Product Details

Purity:	Greater than 95 % as determined by SDS-PAGE
Sterility:	0.2 µm filtered

Target Details

Target:	HTRA2
Alternative Name:	HtrA2 (HTRA2 Products)
Background:	High temperature requirement protein A2, HTRA 2, HtrA like serine protease, HtrA serine peptidase 2, HtrA, E. coli, homolog of, 2, HtrA2, HTRA2_HUMAN, mitochondrial, Omi stress regulated endoprotease, Omi stress-regulated endoprotease, PARK 13, PARK13, Protease serine 25, PRSS 25
Molecular Weight:	24.8 kDa

Target Details

UniProt: [O43464](#)

Pathways: [Positive Regulation of Endopeptidase Activity](#)

Application Details

Application Notes: Optimal working dilution should be determined by the investigator.

Restrictions: For Research Use only

Handling

Format: Lyophilized

Reconstitution: Centrifuge the vial at 10,000 rpm for 1 minute, reconstitute at 200 µg/mL in sterile distilled water by gentle pipetting 2-3 times, don't vortex

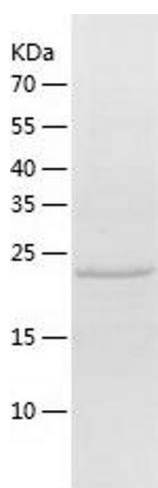
Buffer: Lyophilized from a 0.2 µm filtered solution in 10 mM Hepes, 500 mM NaCl with 5 % trehalose, pH 7.4

Storage: 4 °C, -20 °C

Storage Comment: -20°C for 12 months as lyophilized, 2-8°C for 1 month under sterile conditions after reconstitution

Expiry Date: 12 months

Images



Western Blotting

Image 1.