



[Go to Product page](#)

Datasheet for ABIN7123409

## ISLR Protein (AA 111-275) (His tag)

### 1 Image

#### Overview

Quantity:	50 µg
Target:	ISLR
Protein Characteristics:	AA 111-275
Origin:	Human
Source:	Escherichia coli (E. coli)
Protein Type:	Recombinant
Purification tag / Conjugate:	This ISLR protein is labelled with His tag.
Application:	Western Blotting (WB), ELISA

#### Product Details

Purity:	Greater than 95 % as determined by SDS-PAGE
Sterility:	0.2 µm filtered

#### Target Details

Target:	ISLR
Alternative Name:	ISLR ( <a href="#">ISLR Products</a> )
Background:	AW553146, HsT17563, Immunoglobulin superfamily containing leucine-rich repeat protein, Islr, ISLR_HUMAN, MGC102816, OTTHUMP00000174967, OTTHUMP00000174968, UNQ189/PRO215
Molecular Weight:	18 kDa

## Target Details

---

UniProt: [O14498](#)

## Application Details

---

Application Notes: Optimal working dilution should be determined by the investigator.

Restrictions: For Research Use only

## Handling

---

Format: Lyophilized

Reconstitution: Centrifuge the vial at 10,000 rpm for 1 minute, reconstitute at 200 µg/mL in sterile distilled water by gentle pipetting 2-3 times, don't vortex

Buffer: Lyophilized from a 0.2 µm filtered solution in 10 mM Hepes, 500 mM NaCl with 5 % trehalose, pH 7.4

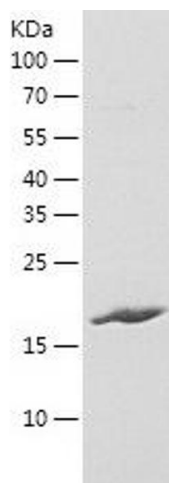
Storage: 4 °C, -20 °C

Storage Comment: -20°C for 12 months as lyophilized, 2-8°C for 1 month under sterile conditions after reconstitution

Expiry Date: 12 months

## Images

---



### Western Blotting

Image 1.