



[Go to Product page](#)

Datasheet for ABIN7123410
IGSF11 Protein (AA 24-241) (His-IF2DI Tag)

1 Image

Overview

Quantity:	50 µg
Target:	IGSF11
Protein Characteristics:	AA 24-241
Origin:	Human
Source:	Escherichia coli (E. coli)
Protein Type:	Recombinant
Purification tag / Conjugate:	This IGSF11 protein is labelled with His-IF2DI Tag.
Application:	ELISA, Western Blotting (WB)

Product Details

Purity:	Greater than 95 % as determined by SDS-PAGE
Sterility:	0.2 µm filtered

Target Details

Target:	IGSF11
Alternative Name:	IGSF11 (IGSF11 Products)
Background:	Brain and testis specific immunoglobulin superfamily protein, BTIGSF, CXADR like 1, CXADRL1, Igsf13, immunoglobulin superfamily member 11, Immunoglobulin superfamily member 11 precursor, MGC35227, V set and immunoglobulin domain containing 3, V set and immunoglobulin domain containing protein 3, VSIG3
Molecular Weight:	43.7 kDa

Application Details

Application Notes: Optimal working dilution should be determined by the investigator.

Restrictions: For Research Use only

Handling

Format: Lyophilized

Reconstitution: Centrifuge the vial at 10,000 rpm for 1 minute, reconstitute at 200 µg/mL in sterile distilled water by gentle pipetting 2-3 times, don't vortex

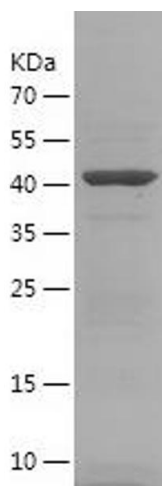
Buffer: Lyophilized from a 0.2 µm filtered solution in 10 mM Hepes, 500 mM NaCl with 5 % trehalose, pH 7.4

Storage: 4 °C, -20 °C

Storage Comment: -20°C for 12 months as lyophilized, 2-8°C for 1 month under sterile conditions after reconstitution

Expiry Date: 12 months

Images



Western Blotting

Image 1.