

Datasheet for ABIN7123422

**MCL-1 Protein (AA 1-327) (His tag)**[Go to Product page](#)**1** Image

## Overview

Quantity:	50 µg
Target:	MCL-1 (MCL1)
Protein Characteristics:	AA 1-327
Origin:	Human
Source:	Escherichia coli (E. coli)
Protein Type:	Recombinant
Purification tag / Conjugate:	This MCL-1 protein is labelled with His tag.
Application:	Western Blotting (WB), ELISA

## Product Details

Purity:	Greater than 95 % as determined by SDS-PAGE
Sterility:	0.2 µm filtered

## Target Details

Target:	MCL-1 (MCL1)
Alternative Name:	MCL1 ( <a href="#">MCL1 Products</a> )
Background:	Bcl 2 related protein EAT/mcl1, Bcl-2-like protein 3, Bcl-2-related protein EAT/mcl1, BCL2 related, Bcl2-L-3, BCL2L3, EAT, Induced myeloid leukemia cell differentiation protein Mcl 1, Induced myeloid leukemia cell differentiation protein Mcl-1
Molecular Weight:	35.9 kDa

## Target Details

UniProt: [Q07820](#)

Pathways: [MAPK Signaling](#)

## Application Details

Application Notes: Optimal working dilution should be determined by the investigator.

Restrictions: For Research Use only

## Handling

Format: Lyophilized

Reconstitution: Centrifuge the vial at 10,000 rpm for 1 minute, reconstitute at 200 µg/mL in sterile distilled water by gentle pipetting 2-3 times, don't vortex

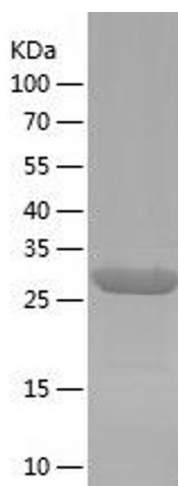
Buffer: Lyophilized from a 0.2 µm filtered solution in 10 mM Hepes, 500 mM NaCl with 5 % trehalose, pH 7.4

Storage: 4 °C, -20 °C

Storage Comment: -20°C for 12 months as lyophilized, 2-8°C for 1 month under sterile conditions after reconstitution

Expiry Date: 12 months

## Images



### Western Blotting

Image 1.