



[Go to Product page](#)

Datasheet for ABIN7123427

ING2 Protein (AA 1-280) (His tag)

1 Image

Overview

Quantity:	50 µg
Target:	ING2
Protein Characteristics:	AA 1-280
Origin:	Human
Source:	Escherichia coli (E. coli)
Protein Type:	Recombinant
Purification tag / Conjugate:	This ING2 protein is labelled with His tag.
Application:	Western Blotting (WB), ELISA

Product Details

Purity:	Greater than 95 % by SDS-PAGE gel analyses
Sterility:	0.2 µm filtered

Target Details

Target:	ING2
Alternative Name:	ING2 (ING2 Products)
Background:	ING 1 like tumor suppressor protein, ING 1L, ING 2, ING1 like tumor suppressor protein, ING1L, ING1Lp, ING2, ING2_HUMAN, Inhibitor of growth 1 like, Inhibitor of growth 1 like protein, Inhibitor of growth 1-like protein, Inhibitor of growth family member 1 like
Molecular Weight:	34.7 kDa

Target Details

UniProt: [Q9H160](#)

Pathways: [Chromatin Binding](#), [Autophagy](#), [Negative Regulation of intrinsic apoptotic Signaling](#)

Application Details

Application Notes: Optimal working dilution should be determined by the investigator.

Restrictions: For Research Use only

Handling

Format: Lyophilized

Reconstitution: Centrifuge the vial at 10,000 rpm for 1 minute, reconstitute at 200 µg/mL in sterile distilled water by gentle pipetting 2-3 times, don't vortex

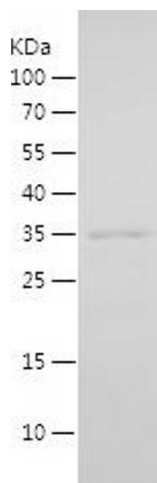
Buffer: Lyophilized from a 0.2 µm filtered solution in PBS with 5 % trehalose, pH 7.4

Storage: 4 °C, -20 °C

Storage Comment: -20°C for 12 months as lyophilized, 2-8°C for 1 month under sterile conditions after reconstitution

Expiry Date: 12 months

Images



Western Blotting

Image 1.