

Datasheet for ABIN7123435

IMPDH1 Protein (AA 1-514) (His tag)[Go to Product page](#)**1** Image

Overview

Quantity:	50 µg
Target:	IMPDH1
Protein Characteristics:	AA 1-514
Origin:	Human
Source:	Escherichia coli (E. coli)
Protein Type:	Recombinant
Purification tag / Conjugate:	This IMPDH1 protein is labelled with His tag.
Application:	ELISA, Western Blotting (WB)

Product Details

Purity:	Greater than 95 % as determined by SDS-PAGE
Sterility:	0.2 µm filtered

Target Details

Target:	IMPDH1
Alternative Name:	IMPDH1 (IMPDH1 Products)
Background:	IMDH1_HUMAN, IMP (inosine monophosphate) dehydrogenase 1, IMP dehydrogenase 1, IMPD, IMPD 1, IMPD1, IMPDH 1, IMPDH I, IMPDH-I, Impdh1, Inosine 5' monophosphate dehydrogenase 1, Inosine monophosphate dehydrogenase 1, Inosine-5"-monophosphate dehydrogenase 1, LCA11, RP10, sWSS2608
Molecular Weight:	56.4 kDa

Target Details

UniProt:	P20839
Pathways:	Ribonucleoside Biosynthetic Process

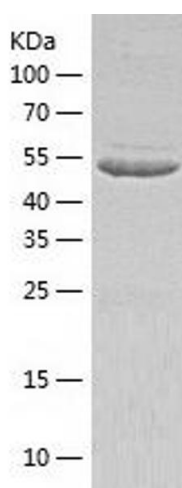
Application Details

Application Notes:	Optimal working dilution should be determined by the investigator.
Restrictions:	For Research Use only

Handling

Format:	Lyophilized
Reconstitution:	Centrifuge the vial at 10,000 rpm for 1 minute, reconstitute at 200 µg/mL in sterile distilled water by gentle pipetting 2-3 times, don't vortex
Buffer:	Lyophilized from a 0.2 µm filtered solution in 10 mM Hepes, 500 mM NaCl with 5 % trehalose, pH 7.4
Storage:	4 °C, -20 °C
Storage Comment:	-20°C for 12 months as lyophilized, 2-8°C for 1 month under sterile conditions after reconstitution
Expiry Date:	12 months

Images



Western Blotting

Image 1.