



[Go to Product page](#)

Datasheet for ABIN7123522

IL36A/IL1F6 Protein (AA 1-158) (His tag)

1 Image

Overview

Quantity:	50 µg
Target:	IL36A/IL1F6 (IL1F6)
Protein Characteristics:	AA 1-158
Origin:	Human
Source:	Escherichia coli (E. coli)
Protein Type:	Recombinant
Purification tag / Conjugate:	This IL36A/IL1F6 protein is labelled with His tag.
Application:	ELISA, Western Blotting (WB)

Product Details

Purity:	Greater than 95 % as determined by SDS-PAGE
Sterility:	0.2 µm filtered

Target Details

Target:	IL36A/IL1F6 (IL1F6)
Alternative Name:	IL36 alpha (IL1F6 Products)
Background:	FIL1, FIL1 epsilon, FIL1(EPSILON), FIL1E, IL 1 epsilon, IL 1F6, IL 1H1, IL-1 epsilon, IL-1F6, IL1E, IL1F6, IL1F6_HUMAN, IL1RP2, IL36 alpha, IL36A, Interleukin 1 epsilon, Interleukin 1 family member 6, Interleukin 1 family member 6 (epsilon), Interleukin 36 alpha, Interleukin-1 epsilon
Molecular Weight:	17.3 kDa

Target Details

UniProt: [Q9UHA7](#)

Pathways: [Cancer Immune Checkpoints](#)

Application Details

Application Notes: Optimal working dilution should be determined by the investigator.

Restrictions: For Research Use only

Handling

Format: Lyophilized

Reconstitution: Centrifuge the vial at 10,000 rpm for 1 minute, reconstitute at 200 µg/mL in sterile distilled water by gentle pipetting 2-3 times, don't vortex

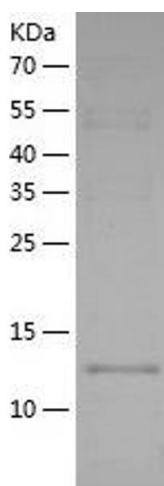
Buffer: Lyophilized from a 0.2 µm filtered solution in 10 mM Hepes, 500 mM NaCl with 5 % trehalose, pH 7.4

Storage: 4 °C, -20 °C

Storage Comment: -20°C for 12 months as lyophilized, 2-8°C for 1 month under sterile conditions after reconstitution

Expiry Date: 12 months

Images



Western Blotting

Image 1.