

Datasheet for ABIN7123577

IL22RA2 Protein (AA 22-231) (His tag)[Go to Product page](#)**1** Image

Overview

Quantity:	50 µg
Target:	IL22RA2
Protein Characteristics:	AA 22-231
Origin:	Human
Source:	Escherichia coli (E. coli)
Protein Type:	Recombinant
Purification tag / Conjugate:	This IL22RA2 protein is labelled with His tag.
Application:	Western Blotting (WB), ELISA

Product Details

Purity:	Greater than 95 % as determined by SDS-PAGE
Sterility:	0.2 µm filtered

Target Details

Target:	IL22RA2
Alternative Name:	IL22 RA2 (IL22RA2 Products)
Background:	IL 22BP, IL 22RA2, IL22RA2, Class II cytokine receptor, CRF2 10, CRF2 S1, CRF2-10, CRF2-S1, CRF2X, Cytokine receptor class II member 10, Cytokine receptor class-II member 10, Cytokine receptor family 2 member 10, Cytokine receptor family type 2
Molecular Weight:	23 kDa

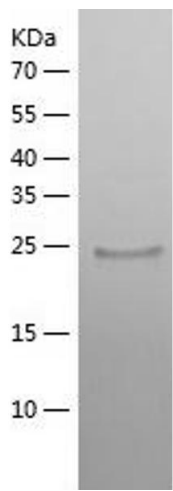
Application Details

Application Notes:	Optimal working dilution should be determined by the investigator.
Restrictions:	For Research Use only

Handling

Format:	Lyophilized
Reconstitution:	Centrifuge the vial at 10,000 rpm for 1 minute, reconstitute at 200 µg/mL in sterile distilled water by gentle pipetting 2-3 times, don't vortex
Buffer:	Lyophilized from a 0.2 µm filtered solution in 10 mM Hepes, 500 mM NaCl with 5 % trehalose, pH 7.4
Storage:	4 °C, -20 °C
Storage Comment:	-20°C for 12 months as lyophilized, 2-8°C for 1 month under sterile conditions after reconstitution
Expiry Date:	12 months

Images



Western Blotting

Image 1.