



[Go to Product page](#)

Datasheet for ABIN7123642

## ISM1 Protein (AA 30-464) (His-IF2DI Tag)

### 1 Image

#### Overview

Quantity:	50 µg
Target:	ISM1
Protein Characteristics:	AA 30-464
Origin:	Human
Source:	Escherichia coli (E. coli)
Protein Type:	Recombinant
Purification tag / Conjugate:	This ISM1 protein is labelled with His-IF2DI Tag.
Application:	Western Blotting (WB), ELISA

#### Product Details

Purity:	Greater than 95 % as determined by SDS-PAGE
Sterility:	0.2 µm filtered

#### Target Details

Target:	ISM1
Alternative Name:	ISM1 ( <a href="#">ISM1 Products</a> )
Background:	BA149I18.1, C20orf82, Chromosome 20 open reading frame 82, dJ1077I2.1, ISM, Isthmin, Isthmin 1, isthmin 1 angiogenesis inhibitor, Isthmin 1 homolog (zebrafish), OTTHUMP00000030295
Molecular Weight:	69.7 kDa

## Target Details

---

UniProt: [B1AKI9](#)

## Application Details

---

Application Notes: Optimal working dilution should be determined by the investigator.

Restrictions: For Research Use only

## Handling

---

Format: Lyophilized

Reconstitution: Centrifuge the vial at 10,000 rpm for 1 minute, reconstitute at 200 µg/mL in sterile distilled water by gentle pipetting 2-3 times, don't vortex

Buffer: Lyophilized from a 0.2 µm filtered solution in 10 mM Hepes, 500 mM NaCl with 5 % trehalose, pH 7.4

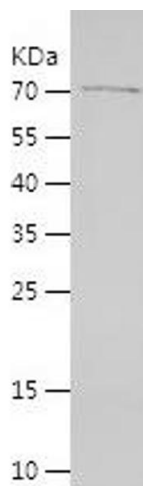
Storage: 4 °C, -20 °C

Storage Comment: -20°C for 12 months as lyophilized, 2-8°C for 1 month under sterile conditions after reconstitution

Expiry Date: 12 months

## Images

---



### Western Blotting

Image 1.