

Datasheet for ABIN7123654

JMY Protein (AA 163-341) (His tag)[Go to Product page](#)**1** Image

Overview

Quantity:	50 µg
Target:	JMY
Protein Characteristics:	AA 163-341
Origin:	Human
Source:	Escherichia coli (E. coli)
Protein Type:	Recombinant
Purification tag / Conjugate:	This JMY protein is labelled with His tag.
Application:	ELISA, Western Blotting (WB)

Product Details

Purity:	Greater than 95 % as determined by SDS-PAGE
Sterility:	0.2 µm filtered

Target Details

Target:	JMY
Alternative Name:	JMY (JMY Products)
Background:	FLJ37870, Jmy, JMY protein, JMY_HUMAN, junction mediating and regulatory protein, Junction mediating and regulatory protein p53 cofactor, Junction-mediating and -regulatory protein, MGC163496, OTTHUMP00000161976, WAS protein homology region 2 domain containing 1-like 3, WHDC1L3
Molecular Weight:	19.6 kDa

Target Details

Pathways: [Regulation of Actin Filament Polymerization](#)

Application Details

Application Notes: Optimal working dilution should be determined by the investigator.

Restrictions: For Research Use only

Handling

Format: Lyophilized

Reconstitution: Centrifuge the vial at 10,000 rpm for 1 minute, reconstitute at 200 µg/mL in sterile distilled water by gentle pipetting 2-3 times, don't vortex

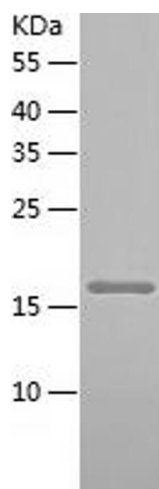
Buffer: Lyophilized from a 0.2 µm filtered solution in 10 mM Hepes, 500 mM NaCl with 5 % trehalose, pH 7.4

Storage: 4 °C,-20 °C

Storage Comment: -20°C for 12 months as lyophilized, 2-8°C for 1 month under sterile conditions after reconstitution

Expiry Date: 12 months

Images



Western Blotting

Image 1.