

Datasheet for ABIN7123658  
**KAT2B Protein (AA 1864-2068) (His-IF2DI Tag)**



[Go to Product page](#)

1 Image

Overview

|                               |  |
|-------------------------------|--|
| Quantity:                     | 50 µg  |
| Target:                       | KAT2B  |
| Protein Characteristics:      | AA 1864-2068                                       |
| Origin:                       | Human  |
| Source:                       | Escherichia coli (E. coli)                         |
| Protein Type:                 | Recombinant  |
| Purification tag / Conjugate: | This KAT2B protein is labelled with His-IF2DI Tag. |
| Application:                  | Western Blotting (WB), ELISA                       |

Product Details

|            |  |
|------------|--|
| Purity:    | Greater than 95 % by SDS-PAGE gel analyses |
| Sterility: | 0.2 µm filtered                            |

Target Details

|                   |  |
|-------------------|--|
| Target:           | KAT2B  |
| Alternative Name: | CAF ( <a href="#">KAT2B Products</a> )   |
| Background:       | CAF, CAF 1, CAF 1 subunit A, CAF I 150 kDa subunit, CAF I p150, CAF1, CAF1B, CAF1P150, CHAF1A, hp150, P150 |
| Molecular Weight: | 23.8 kDa   |
| UniProt:          | <a href="#">O00468</a>   |

## Target Details

---

Pathways: [p53 Signaling](#), [Regulation of Carbohydrate Metabolic Process](#)

## Application Details

---

Application Notes: Optimal working dilution should be determined by the investigator.

Restrictions: For Research Use only

## Handling

---

Format: Lyophilized

Reconstitution: Centrifuge the vial at 10,000 rpm for 1 minute, reconstitute at 200 µg/mL in sterile distilled water by gentle pipetting 2-3 times, don't vortex

Buffer: Lyophilized from a 0.2 µm filtered solution in PBS with 5 % trehalose, pH 7.4

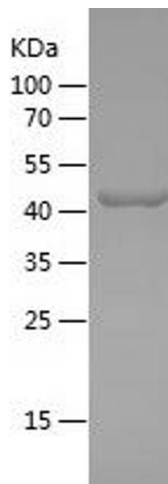
Storage: 4 °C, -20 °C

Storage Comment: -20°C for 12 months as lyophilized, 2-8°C for 1 month under sterile conditions after reconstitution

Expiry Date: 12 months

## Images

---



### Western Blotting

Image 1.