



[Go to Product page](#)

Datasheet for ABIN7123664

KAL1 Protein (AA 384-680) (His tag)

1 Image

Overview

Quantity:	50 µg
Target:	KAL1
Protein Characteristics:	AA 384-680
Origin:	Human
Source:	Escherichia coli (E. coli)
Protein Type:	Recombinant
Purification tag / Conjugate:	This KAL1 protein is labelled with His tag.
Application:	Western Blotting (WB), ELISA

Product Details

Purity:	Greater than 95 % as determined by SDS-PAGE
Sterility:	0.2 µm filtered

Target Details

Target:	KAL1
Alternative Name:	KAL1 (KAL1 Products)
Background:	Adhesion molecule-like X-linked, ADMLX, Anosmin-1, HHA, KAL, KAL1, KALIG 1, KALIG1, Kallmann syndrome 1 sequence, Kallmann syndrome 1 sequence (anosmin 1), Kallmann syndrome interval gene 1, Kallmann syndrome protein, KALM, KALM_HUMAN, KMS, OTTHUMP00000022873
Molecular Weight:	32.6 kDa

Target Details

UniProt: [P23352](#)

Application Details

Application Notes: Optimal working dilution should be determined by the investigator.

Restrictions: For Research Use only

Handling

Format: Lyophilized

Reconstitution: Centrifuge the vial at 10,000 rpm for 1 minute, reconstitute at 200 µg/mL in sterile distilled water by gentle pipetting 2-3 times, don't vortex

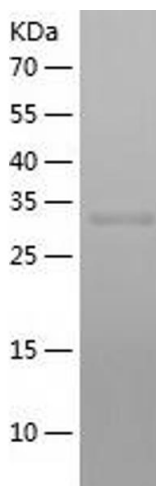
Buffer: Lyophilized from a 0.2 µm filtered solution in 10 mM Hepes, 500 mM NaCl with 5 % trehalose, pH 7.4

Storage: 4 °C, -20 °C

Storage Comment: -20°C for 12 months as lyophilized, 2-8°C for 1 month under sterile conditions after reconstitution

Expiry Date: 12 months

Images



Western Blotting

Image 1.