



[Go to Product page](#)

Datasheet for ABIN7123677

## Keratin 6B Protein (KRT6B) (AA 5-90) (His-IF2DI Tag)

### 1 Image

#### Overview

Quantity:	50 µg
Target:	Keratin 6B (KRT6B)
Protein Characteristics:	AA 5-90
Origin:	Human
Source:	Escherichia coli (E. coli)
Protein Type:	Recombinant
Purification tag / Conjugate:	This Keratin 6B protein is labelled with His-IF2DI Tag.
Application:	ELISA, Western Blotting (WB)

#### Product Details

Purity:	Greater than 95 % by SDS-PAGE gel analyses
Sterility:	0.2 µm filtered

#### Target Details

Target:	Keratin 6B (KRT6B)
Alternative Name:	KRT6B ( <a href="#">KRT6B Products</a> )
Background:	CK 6B, CK6B, Cytokeratin 6B, K6B, keratin 6B, KRT6B, KRTL1, Type II keratin Kb10
Molecular Weight:	28.8 kDa
UniProt:	<a href="#">P04259</a>

## Application Details

---

Application Notes: Optimal working dilution should be determined by the investigator.

Restrictions: For Research Use only

## Handling

---

Format: Lyophilized

Reconstitution: Centrifuge the vial at 10,000 rpm for 1 minute, reconstitute at 200 µg/mL in sterile distilled water by gentle pipetting 2-3 times, don't vortex

Buffer: Lyophilized from a 0.2 µm filtered solution in PBS with 5 % trehalose, pH 7.4

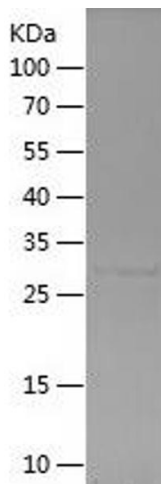
Storage: 4 °C,-20 °C

Storage Comment: -20°C for 12 months as lyophilized, 2-8°C for 1 month under sterile conditions after reconstitution

Expiry Date: 12 months

## Images

---



### Western Blotting

Image 1.