



[Go to Product page](#)

Datasheet for ABIN7123683

## Rubicon Protein (AA 10-278) (His-IF2DI Tag)

### 1 Image

#### Overview

Quantity:	50 µg
Target:	Rubicon (KIAA0226)
Protein Characteristics:	AA 10-278
Origin:	Human
Source:	Escherichia coli (E. coli)
Protein Type:	Recombinant
Purification tag / Conjugate:	This Rubicon protein is labelled with His-IF2DI Tag.
Application:	ELISA, Western Blotting (WB)

#### Product Details

Purity:	Greater than 90 % by SDS-PAGE gel analyses
Sterility:	0.2 µm filtered

#### Target Details

Target:	Rubicon (KIAA0226)
Alternative Name:	Rubicon ( <a href="#">KIAA0226 Products</a> )
Background:	Baron, KIAA0226, RUBCN, Rubicon
Molecular Weight:	51.0 kDa
UniProt:	<a href="#">Q92622</a>
Pathways:	<a href="#">Autophagy</a>

## Application Details

---

Application Notes: Optimal working dilution should be determined by the investigator.

---

Restrictions: For Research Use only

---

## Handling

---

Format: Lyophilized

---

Reconstitution: Centrifuge the vial at 10,000 rpm for 1 minute, reconstitute at 200 µg/mL in sterile distilled water by gentle pipetting 2-3 times, don't vortex

---

Buffer: Lyophilized from a 0.2 µm filtered solution in PBS with 5 % trehalose, pH 7.4

---

Storage: 4 °C,-20 °C

---

Storage Comment: -20°C for 12 months as lyophilized, 2-8°C for 1 month under sterile conditions after reconstitution

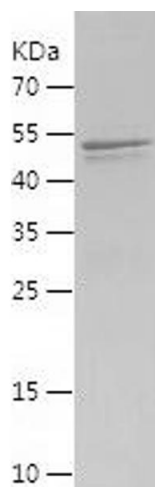
---

Expiry Date: 12 months

---

## Images

---



### Western Blotting

Image 1.