



Datasheet for ABIN7123687

KIR3DL1 Protein (AA 361-444) (His tag)



[Go to Product page](#)

1 Image

Overview

Quantity:	50 µg
Target:	KIR3DL1
Protein Characteristics:	AA 361-444
Origin:	Human
Source:	Escherichia coli (E. coli)
Protein Type:	Recombinant
Purification tag / Conjugate:	This KIR3DL1 protein is labelled with His tag.
Application:	Western Blotting (WB), ELISA

Product Details

Purity:	Greater than 95 % as determined by SDS-PAGE
Sterility:	0.2 µm filtered

Target Details

Target:	KIR3DL1
Alternative Name:	KIR3DL1 (KIR3DL1 Products)
Background:	AMB11, CD158 antigen-like family member E, CD158e, CD158e antigen, CD158E1, CD158E1/2, CD158E2, CL11, CL2, HLA-BW4-specific inhibitory NK cell receptor, KI3L1_HUMAN, killer cell immunoglobulin like receptor, Killer cell immunoglobulin like receptor three domains
Molecular Weight:	9.1 kDa

Target Details

UniProt: [P43629](#)

Application Details

Application Notes: Optimal working dilution should be determined by the investigator.

Restrictions: For Research Use only

Handling

Format: Lyophilized

Reconstitution: Centrifuge the vial at 10,000 rpm for 1 minute, reconstitute at 200 µg/mL in sterile distilled water by gentle pipetting 2-3 times, don't vortex

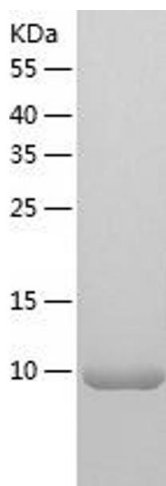
Buffer: Lyophilized from a 0.2 µm filtered solution in 10 mM Hepes, 500 mM NaCl with 5 % trehalose, pH 7.4

Storage: 4 °C, -20 °C

Storage Comment: -20°C for 12 months as lyophilized, 2-8°C for 1 month under sterile conditions after reconstitution

Expiry Date: 12 months

Images



Western Blotting

Image 1.