



[Go to Product page](#)

Datasheet for ABIN7123694

## KIT Ligand Protein (KITLG) (AA 26-189) (His-IF2DI Tag)

### 1 Image

#### Overview

Quantity:	50 µg
Target:	KIT Ligand (KITLG)
Protein Characteristics:	AA 26-189
Origin:	Human
Source:	Escherichia coli (E. coli)
Protein Type:	Recombinant
Purification tag / Conjugate:	This KIT Ligand protein is labelled with His-IF2DI Tag.
Application:	Western Blotting (WB), ELISA

#### Product Details

Purity:	Greater than 95 % as determined by SDS-PAGE
Sterility:	0.2 µm filtered

#### Target Details

Target:	KIT Ligand (KITLG)
Alternative Name:	SCF ( <a href="#">KITLG Products</a> )
Background:	C kit ligand, C-kit ligand, Ckit ligand, DCUA, DFNA69, DKFZp686F2250, familial progressive hyperpigmentation 2, FPH2, FPHH, KIT ligand, Kitl, KITLG, KL 1, KL1, Mast cell growth factor, MGF, MGF stem cell factor, SCF, SCF_HUMAN, SF, SHEP7, sKITLG, Soluble KIT ligand, Steel factor
Molecular Weight:	39.1 kDa

## Target Details

UniProt:	<a href="#">P21583</a>
Pathways:	<a href="#">RTK Signaling</a> , <a href="#">Fc-epsilon Receptor Signaling Pathway</a> , <a href="#">EGFR Signaling Pathway</a> , <a href="#">Neurotrophin Signaling Pathway</a>

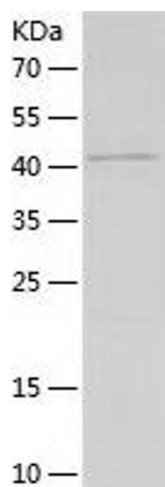
## Application Details

Application Notes:	Optimal working dilution should be determined by the investigator.
Restrictions:	For Research Use only

## Handling

Format:	Lyophilized
Reconstitution:	Centrifuge the vial at 10,000 rpm for 1 minute, reconstitute at 200 µg/mL in sterile distilled water by gentle pipetting 2-3 times, don't vortex
Buffer:	Lyophilized from a 0.2 µm filtered solution in 10 mM Hepes, 500 mM NaCl with 5 % trehalose, pH 7.4
Storage:	4 °C, -20 °C
Storage Comment:	-20°C for 12 months as lyophilized, 2-8°C for 1 month under sterile conditions after reconstitution
Expiry Date:	12 months

## Images



### Western Blotting

Image 1.