



[Go to Product page](#)

Datasheet for ABIN7123712

Lamin A/C Protein (LMNA) (AA 26-198) (His tag)

1 Image

Overview

Quantity:	50 µg
Target:	Lamin A/C (LMNA)
Protein Characteristics:	AA 26-198
Origin:	Human
Source:	Escherichia coli (E. coli)
Protein Type:	Recombinant
Purification tag / Conjugate:	This Lamin A/C protein is labelled with His tag.
Application:	Western Blotting (WB), ELISA

Product Details

Purity:	Greater than 95 % by SDS-PAGE gel analyses
Sterility:	0.2 µm filtered

Target Details

Target:	Lamin A/C (LMNA)
Alternative Name:	Lamin A/C (LMNA Products)
Background:	70 kDa lamin, CDCD1, CDDC, CMD1A, CMT2B1, EMD2, FPL, FPLD, HGPS, IDC, lamin A, lamin A/C, LDP1, LFP, LGMD1B, LMN1, LMNA, LMNC, Prelamin A/C, PRO1, progerin
Molecular Weight:	21.5 kDa
UniProt:	P02545

Target Details

Pathways: [Apoptosis](#), [Caspase Cascade in Apoptosis](#), [ER-Nucleus Signaling](#), [Protein targeting to Nucleus](#)

Application Details

Application Notes: Optimal working dilution should be determined by the investigator.

Restrictions: For Research Use only

Handling

Format: Lyophilized

Reconstitution: Centrifuge the vial at 10,000 rpm for 1 minute, reconstitute at 200 µg/mL in sterile distilled water by gentle pipetting 2-3 times, don't vortex

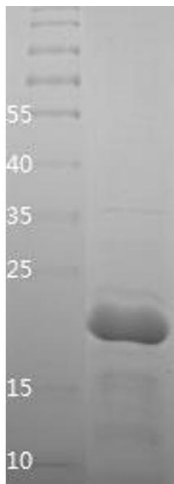
Buffer: Lyophilized from a 0.2 µm filtered solution in PBS with 5 % trehalose, pH 7.4

Storage: 4 °C, -20 °C

Storage Comment: -20°C for 12 months as lyophilized, 2-8°C for 1 month under sterile conditions after reconstitution

Expiry Date: 12 months

Images



Western Blotting

Image 1.