



[Go to Product page](#)

Datasheet for ABIN7123724

LATS2 Protein (AA 120-234) (His tag)

1 Image

Overview

Quantity:	50 µg
Target:	LATS2
Protein Characteristics:	AA 120-234
Origin:	Human
Source:	Escherichia coli (E. coli)
Protein Type:	Recombinant
Purification tag / Conjugate:	This LATS2 protein is labelled with His tag.
Application:	ELISA, Western Blotting (WB)

Product Details

Purity:	Greater than 95 % by SDS-PAGE gel analyses
Sterility:	0.2 µm filtered

Target Details

Target:	LATS2
Alternative Name:	LATS2 (LATS2 Products)
Background:	FLJ13161, Kinase phosphorylated during mitosis protein, KPM, Large tumor suppressor homolog 2, Large tumor suppressor homolog 2 Drosophila, Large tumor suppressor kinase 2, LATS large tumor suppressor Drosophila homolog 2, LATS large tumor suppressor homolog 2
Molecular Weight:	14.3 kDa

Target Details

UniProt: [Q9NRM7](#)

Application Details

Application Notes: Optimal working dilution should be determined by the investigator.

Restrictions: For Research Use only

Handling

Format: Lyophilized

Reconstitution: Centrifuge the vial at 10,000 rpm for 1 minute, reconstitute at 200 µg/mL in sterile distilled water by gentle pipetting 2-3 times, don't vortex

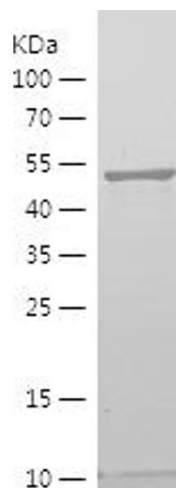
Buffer: Lyophilized from a 0.2 µm filtered solution in PBS with 5 % trehalose, pH 7.4

Storage: 4 °C, -20 °C

Storage Comment: -20°C for 12 months as lyophilized, 2-8°C for 1 month under sterile conditions after reconstitution

Expiry Date: 12 months

Images



Western Blotting

Image 1.