

Datasheet for ABIN7123749

LCMT1 Protein (AA 1-334) (His tag)[Go to Product page](#)**1** Image

Overview

Quantity:	50 µg
Target:	LCMT1
Protein Characteristics:	AA 1-334
Origin:	Human
Source:	Escherichia coli (E. coli)
Protein Type:	Recombinant
Purification tag / Conjugate:	This LCMT1 protein is labelled with His tag.
Application:	ELISA, Western Blotting (WB)

Product Details

Purity:	Greater than 95 % as determined by SDS-PAGE
Sterility:	0.2 µm filtered

Target Details

Target:	LCMT1
Alternative Name:	LCMT1 (LCMT1 Products)
Background:	[Phosphatase 2A protein]-leucine-carboxy methyltransferase 1, CGI 68, LCMT, LCMT1, LCMT1_HUMAN, Leucine carboxyl methyltransferase 1, PPMT1, Protein leucine O methyltransferase, protein phosphatase methyltransferase 1, Protein-leucine O-methyltransferase
Molecular Weight:	36.6 kDa

Target Details

UniProt: [Q9UIC8](#)

Application Details

Application Notes: Optimal working dilution should be determined by the investigator.

Restrictions: For Research Use only

Handling

Format: Lyophilized

Reconstitution: Centrifuge the vial at 10,000 rpm for 1 minute, reconstitute at 200 µg/mL in sterile distilled water by gentle pipetting 2-3 times, don't vortex

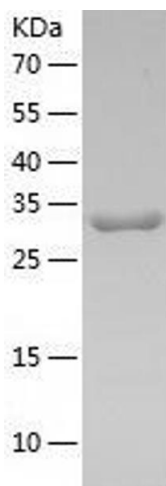
Buffer: Lyophilized from a 0.2 µm filtered solution in 10 mM Hepes, 500 mM NaCl with 5 % trehalose, pH 7.4

Storage: 4 °C,-20 °C

Storage Comment: -20°C for 12 months as lyophilized, 2-8°C for 1 month under sterile conditions after reconstitution

Expiry Date: 12 months

Images



Western Blotting

Image 1.