



[Go to Product page](#)

Datasheet for ABIN7123768

LIN7A Protein (AA 1-233) (His tag)

1 Image

Overview

Quantity:	50 µg
Target:	LIN7A
Protein Characteristics:	AA 1-233
Origin:	Human
Source:	Escherichia coli (E. coli)
Protein Type:	Recombinant
Purification tag / Conjugate:	This LIN7A protein is labelled with His tag.
Application:	ELISA, Western Blotting (WB)

Product Details

Purity:	Greater than 95 % as determined by SDS-PAGE
Sterility:	0.2 µm filtered

Target Details

Target:	LIN7A
Alternative Name:	LIN7A (LIN7A Products)
Background:	HLin-7, Lin 7 homolog A (C. elegans), LIN 7A, Lin-7A, LIN7, LIN7A, LIN7A_HUMAN, MALS-1, Mammalian LIN 7 1, Mammalian lin-seven protein 1, Protein lin-7 homolog A, Tax interaction protein 33, TIP-33, Veli-1, VELI1, Vertebrate lin-7 homolog 1, Vertebrate LIN7 homolog 1
Molecular Weight:	25.5 kDa

Target Details

UniProt: [O14910](#)

Pathways: [Synaptic Membrane](#)

Application Details

Application Notes: Optimal working dilution should be determined by the investigator.

Restrictions: For Research Use only

Handling

Format: Lyophilized

Reconstitution: Centrifuge the vial at 10,000 rpm for 1 minute, reconstitute at 200 µg/mL in sterile distilled water by gentle pipetting 2-3 times, don't vortex

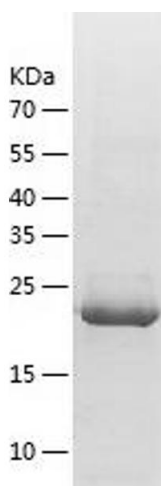
Buffer: Lyophilized from a 0.2 µm filtered solution in 10 mM Hepes, 500 mM NaCl with 5 % trehalose, pH 7.4

Storage: 4 °C, -20 °C

Storage Comment: -20°C for 12 months as lyophilized, 2-8°C for 1 month under sterile conditions after reconstitution

Expiry Date: 12 months

Images



Western Blotting

Image 1.