

Datasheet for ABIN7123771

LAT Protein (AA 28-233) (His tag)[Go to Product page](#)**1** Image

Overview

Quantity:	50 µg
Target:	LAT
Protein Characteristics:	AA 28-233
Origin:	Human
Source:	Escherichia coli (E. coli)
Protein Type:	Recombinant
Purification tag / Conjugate:	This LAT protein is labelled with His tag.
Application:	Western Blotting (WB), ELISA

Product Details

Purity:	Greater than 95 % as determined by SDS-PAGE
Sterility:	0.2 µm filtered

Target Details

Target:	LAT
Alternative Name:	LAT (LAT Products)
Background:	36 kDa phospho tyrosine adapter protein, 36 kDa phospho-tyrosine adapter protein, 36 kDa phospho-tyrosine adaptor protein, lat, LAT 1, LAT_HUMAN, LAT1, Linker for activation of T cells, Linker for activation of T cells family member 1, linker for activation of T cells
Molecular Weight:	22.6 kDa

Target Details

Pathways: [TCR Signaling, Fc-epsilon Receptor Signaling Pathway](#)

Application Details

Application Notes: Optimal working dilution should be determined by the investigator.

Restrictions: For Research Use only

Handling

Format: Lyophilized

Reconstitution: Centrifuge the vial at 10,000 rpm for 1 minute, reconstitute at 200 µg/mL in sterile distilled water by gentle pipetting 2-3 times, don't vortex

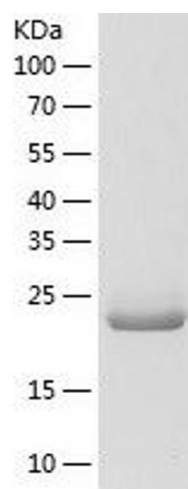
Buffer: Lyophilized from a 0.2 µm filtered solution in 10 mM Hepes, 500 mM NaCl with 5 % trehalose, pH 7.4

Storage: 4 °C, -20 °C

Storage Comment: -20°C for 12 months as lyophilized, 2-8°C for 1 month under sterile conditions after reconstitution

Expiry Date: 12 months

Images



Western Blotting

Image 1.