

Datasheet for ABIN7123772

LAT2 Protein (AA 27-243) (His tag)**1** Image[Go to Product page](#)

Overview

Quantity:	50 µg
Target:	LAT2
Protein Characteristics:	AA 27-243
Origin:	Human
Source:	Escherichia coli (E. coli)
Protein Type:	Recombinant
Purification tag / Conjugate:	This LAT2 protein is labelled with His tag.
Application:	Western Blotting (WB), ELISA

Product Details

Purity:	Greater than 95 % as determined by SDS-PAGE
Sterility:	0.2 µm filtered

Target Details

Target:	LAT2
Alternative Name:	NTAL (LAT2 Products)
Background:	HSPC046, LAB, LAT2, Linker for activation of B cells, Linker for activation of B-cells, Linker for activation of T cells family member 2, Linker for activation of T cells transmembrane adaptor 2, Linker for activation of T-cells family member 2, Membrane associated adapter molecule
Molecular Weight:	23.8 kDa

Target Details

UniProt:	Q9GZY6
Pathways:	Fc-epsilon Receptor Signaling Pathway, BCR Signaling

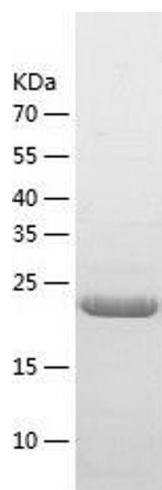
Application Details

Application Notes:	Optimal working dilution should be determined by the investigator.
Restrictions:	For Research Use only

Handling

Format:	Lyophilized
Reconstitution:	Centrifuge the vial at 10,000 rpm for 1 minute, reconstitute at 200 µg/mL in sterile distilled water by gentle pipetting 2-3 times, don't vortex
Buffer:	Lyophilized from a 0.2 µm filtered solution in 10 mM Hepes, 500 mM NaCl with 5 % trehalose, pH 7.4
Storage:	4 °C,-20 °C
Storage Comment:	-20°C for 12 months as lyophilized, 2-8°C for 1 month under sterile conditions after reconstitution
Expiry Date:	12 months

Images



Western Blotting

Image 1.