

Datasheet for ABIN7123779

**LITAF Protein (AA 1-75) (His-IF2DI Tag)**[Go to Product page](#)**1** Image

## Overview

Quantity:	50 µg
Target:	LITAF
Protein Characteristics:	AA 1-75
Origin:	Human
Source:	Escherichia coli (E. coli)
Protein Type:	Recombinant
Purification tag / Conjugate:	This LITAF protein is labelled with His-IF2DI Tag.
Application:	ELISA, Western Blotting (WB)

## Product Details

Purity:	Greater than 95 % by SDS-PAGE gel analyses
Sterility:	0.2 µm filtered

## Target Details

Target:	LITAF
Alternative Name:	LITAF ( <a href="#">LITAF Products</a> )
Background:	Lipopolysaccharide induced TNF alpha factor, CMT1C, FLJ38636, Lipopolysaccharide induced TNF alpha factor, Lipopolysaccharide induced TNF factor, Lipopolysaccharide induced tumor necrosis factor alpha factor, Lipopolysaccharide-induced tumor necrosis factor-alpha factor
Molecular Weight:	28.1 kDa

## Target Details

UniProt:	<a href="#">Q99732</a>
Pathways:	<a href="#">Cellular Response to Molecule of Bacterial Origin</a>

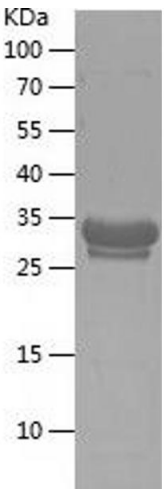
## Application Details

Application Notes:	Optimal working dilution should be determined by the investigator.
Restrictions:	For Research Use only

## Handling

Format:	Lyophilized
Reconstitution:	Centrifuge the vial at 10,000 rpm for 1 minute, reconstitute at 200 µg/mL in sterile distilled water by gentle pipetting 2-3 times, don't vortex
Buffer:	Lyophilized from a 0.2 µm filtered solution in PBS with 5 % trehalose, pH 7.4
Storage:	4 °C,-20 °C
Storage Comment:	-20°C for 12 months as lyophilized, 2-8°C for 1 month under sterile conditions after reconstitution
Expiry Date:	12 months

## Images



### Western Blotting

Image 1.